

734645

SEVENTH SUPPLEMENTAL DECLARATION TO  
DECLARATION OF CONDOMINIUM  
OF  
SEASONS AT SANDPOINT

FILED BY Andy Elliott  
DATE 8/17/07 TIME 3:57 P  
MARIE SCOTT,  
RECORDED BONNER COUNTY  
Rahab DEPUTY  
FEE \$ 135.00

THIS SEVENTH SUPPLEMENTAL DECLARATION TO DECLARATION OF CONDOMINIUM OF SEASONS AT SANDPOINT is made and executed by BVG SANDPOINT LTD., a Florida limited partnership ("Declarant"), with reference to the following:

RECITALS

WHEREAS, Declarant has executed and filed that certain Declaration of Condominium of Seasons at Sandpoint recorded on July 13, 2004, as Instrument No. 654608, and re-recorded on September 10, 2004, as Instrument No. 659133, Official Records of Bonner County, Idaho (the "Declaration"), together with that certain First Supplemental Declaration to Declaration of Condominium of Seasons at Sandpoint recorded on October 6, 2004, as Instrument No. 661116, Official Records of Bonner County, Idaho, together with that certain Second Supplemental Declaration to Declaration of Condominium of Seasons at Sandpoint recorded on December 16, 2004, as Instrument No. 666363, Official Records of Bonner County, Idaho, together with that certain Third Supplemental Declaration to Declaration of Condominium of Seasons at Sandpoint recorded on February 15, 2006, as Instrument No. 698264, Official Records of Bonner County, Idaho, together with that certain Fourth Supplemental Declaration to Declaration of Condominium of Seasons at Sandpoint recorded on July 18, 2006, as Instrument No. 708566, Official Records of Bonner County, Idaho, together with that certain Fifth Supplemental Declaration to Declaration of Condominium of Seasons at Sandpoint recorded on April 5, 2007, as Instrument No. 726237, Official Records of Bonner County, Idaho, together with that certain Sixth Supplemental Declaration to Declaration of Condominium of Seasons at Sandpoint recorded on June 8, 2007, as Instrument No. 730412, Official Records of Bonner County, Idaho with the First Supplemental Declaration, the Second Supplemental Declaration, the Third Supplemental Declaration, the Fourth Supplemental Declaration, the Fifth Supplemental Declaration and the Sixth Supplemental Declaration hereinafter being referred to collectively as the "Supplemental Declarations";

WHEREAS, Pursuant to Section 4 of the Declaration the Declarant reserves the right in its exclusive discretion to control the mixture and location of buildings and other improvements in future Phases of the Condominium, and to modify the Condominium Plat Map as to configuration, size and dimensions of Buildings contained within the Phase, and to make changes in the legal description of a Phase; and

WHEREAS, pursuant to Section 14(c) of the Declaration, during the time the Declarant has the right to elect a majority of the Board of Directors of the Association, the Declaration may be amended by the Declarant alone, without requiring the consent of any other party, to effect any change whatsoever.

NOW, THEREFORE the Declarant hereby amends the Declaration and the Supplemental Declarations as follows:

ORIGINAL

1. Revocation of the Sixth Supplemental Declaration. Pursuant to Section 14(c) of the Declaration, the Sixth Supplemental Declaration to Declaration of Condominium of Seasons at Sandpoint recorded on June 8, 2007, as Instrument No. 730412, Official Records of Bonner County, Idaho is hereby revoked and rescinded in its entirety and shall be of no further force or effect.

2. Re-Annexation of Phase V. In accordance with the revocation of the Sixth Supplemental Declaration as provided in Section 1 above, Declarant hereby submits to the Condominium Form of Ownership the Phase V property as depicted on the Condominium Plat Map contained in Exhibit "A" attached hereto and incorporated by this reference into this Seventh Supplemental Declaration.

3. Modification of Building 8 of Phase IV. Pursuant to Sections 4 and 5 of the Declaration, the Declarant hereby amends the Declaration as it pertains to Phase IV as depicted in the Declaration, and as revised and amended in the Sixth Supplemental Declaration. Notwithstanding the depiction of Phase IV on the Condominium Plat Map contained in the Condominium Plat Map contained in Exhibit "A" to the Sixth Supplemental Declaration, the revised and amended Phase IV shall include Building No. 8 as depicted and more particularly described on Exhibit "B" attached hereto and incorporated by this reference into this Seventh Supplemental Declaration. The inclusion of Building No. 8 in the revised and amended Phase IV as depicted in Exhibit "B" pursuant to this Seventh Supplemental Declaration shall supercede the inclusion of Building No. 8 in Phase IV according to the Sixth Supplemental Declaration which is consequently revoked by this Seventh Supplemental Declaration. Section 4(c) of the Declaration regarding Phase IV is hereby amended consistent with the foregoing.

4. Combined Units. Pursuant to Section 14(c) of the Declaration, Section 36 of the Declaration is hereby deleted in its entirety and replaced with the following:

36. COMBINED UNITS. A Unit Owner may purchase two adjacent Condominium Units or Condominium Lots and customize and combine said Condominium Units or Condominium Lots to form one living residence; provided, said construction is performed in accordance with all applicable governmental regulations and building codes and said construction does not affect the structural integrity and soundness of any other Condominium Units or Condominium Lots, Common Areas or the Building, and further subject to the Association's approval or disapproval of the proposed penetration and connection of affected Common Areas. Moreover, for purposes of ascertaining the undivided share of the Common Expenses, the percentage share of Unit Ownership interest in the Common Surplus and Common Areas, voting rights and payment of assessments, the combined Condominium Units or Condominium Lots shall still be deemed one Condominium Unit or Condominium Lot, as reflected on an amended Condominium Plat Map. Moreover, any such combined Condominium Units or Condominium Lots shall now be deemed to consist of one Condominium Unit or Condominium Lot for the purposes of computing the percentage of Unit Ownership of Common Area in accordance with Section 10.

5. Combination of Units 334 and 335. Pursuant to Sections 14(c) and 36 of the Declaration, the Declarant hereby partially amends the Declaration as it pertains to Phase I as depicted in the Declaration. Notwithstanding the depiction of Phase I on the Condominium Plat Map contained in Exhibit "B" to the Declaration, the revised and amended Phase I shall revise, restate and combine Unit 334 and Unit 335 of Building No. 3 into one (1) Condominium Unit hereinafter described as Unit 334 as depicted and more particularly described on Exhibit "C" attached hereto and incorporated by this reference into this Seventh Supplemental Declaration. Section 3(a) of the Declaration regarding Phase IV is hereby amended consistent with the foregoing.

6. Rental Pool Program. Pursuant to Section 14(c) of the Declaration, Section 40 of the Declaration is hereby deleted in its entirety and replaced with the following:

40. RENTAL POOL PROGRAM. The lease with Boutique Resorts allows it to lease a portion of the clubhouse for purposes of providing certain services and related amenities to the Units and their occupants, which may include (without obligation or without limitation) a rental program offering transient rental services and reservations, housekeeping and room service. The rental program will be non-mandatory and each Unit Owner would have the option, but not the obligation, to enter into a program that would offer the Units to the public on a daily basis and in accordance with all applicable zoning restrictions. The rental program would be managed by Boutique Resorts or by a third party selected by it. The rental program is completely voluntary and Unit Owners may rent their Units without having to participate in the rental program. The additional expenses to Unit Owners associated with the use of the rental program would be charged only to the participating Unit Owners pursuant to individual agreements and would not be included in the Common Expenses of the Condominium. Modifications to the Units may effect their eligibility for the rental program.

7. Ratification. In all other respects each of the terms and provisions of the Declaration and the Supplemental Declarations are hereby ratified and confirmed except as specifically amended herein.

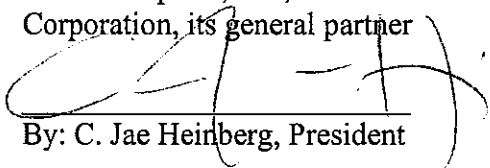
[SIGNATURES TO FOLLOW]

IN WITNESS WHEREOF, the undersigned have executed this instrument this 25 day of July, 2007.

**DECLARANT:**

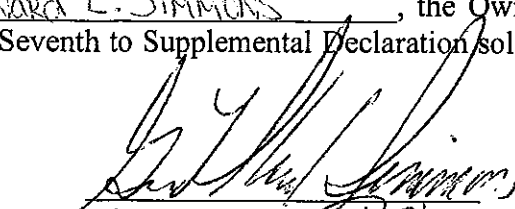
BVG Sandpoint, Ltd., a Florida  
limited partnership

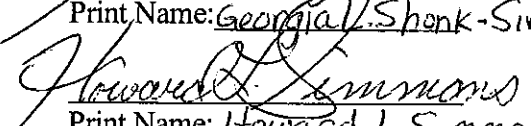
By: BVG Sandpoint, Inc., a Florida  
Corporation, its general partner

  
By: C. Jae Heinberg, President

**JOINDER AND CONSENT**

Georgia L. Shank-Simmons + Howard L. Simmons, the Owner  
of Unit 334 hereby joins and consents to this Seventh to Supplemental Declaration solely  
for the purposes set forth in Section 5 hereof.

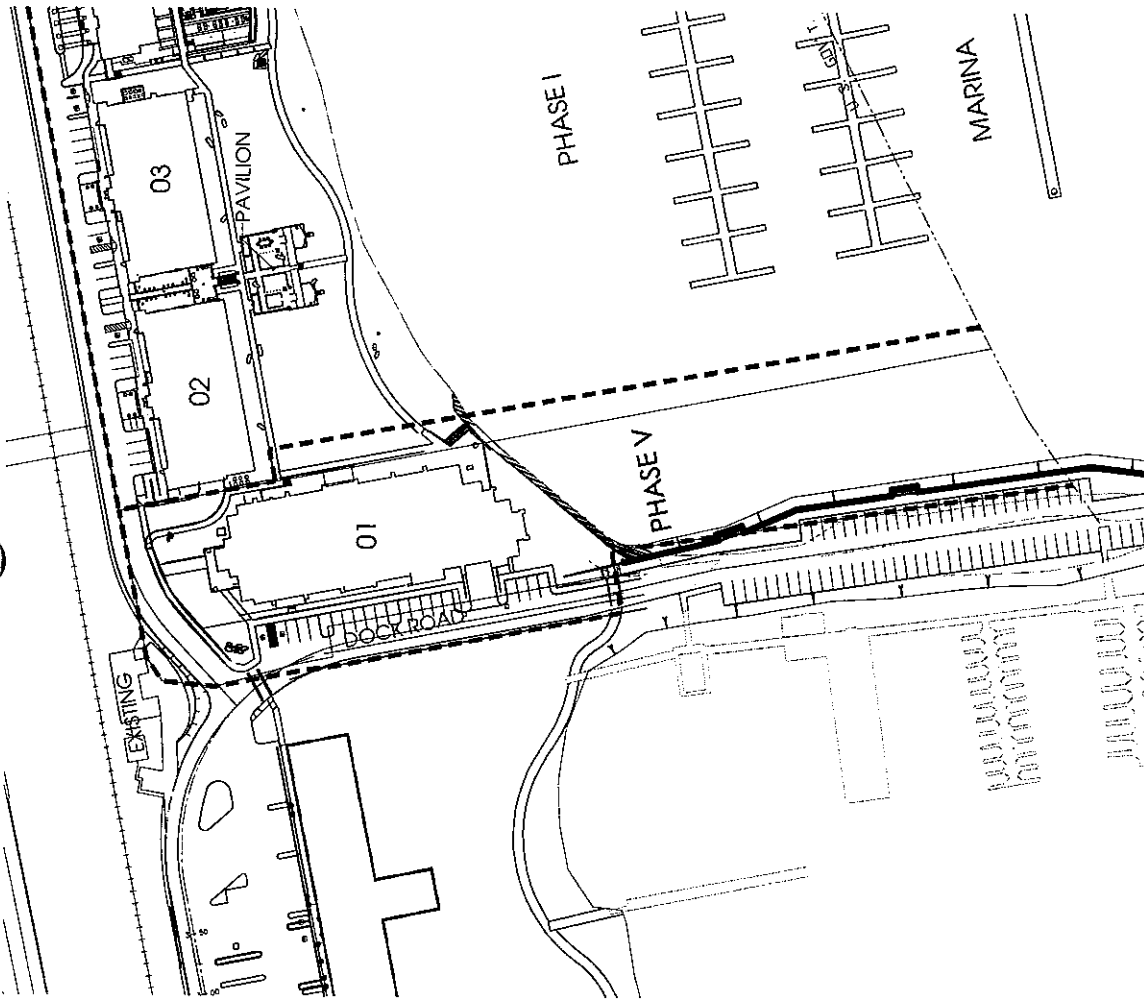
  
Print Name: Georgia L. Shank-Simmons

  
Print Name: Howard L. Simmons

**EXHIBIT A**

**Phase V**

**Condominium Plat Map**



PHASE V SITE PLAN

0 75 150

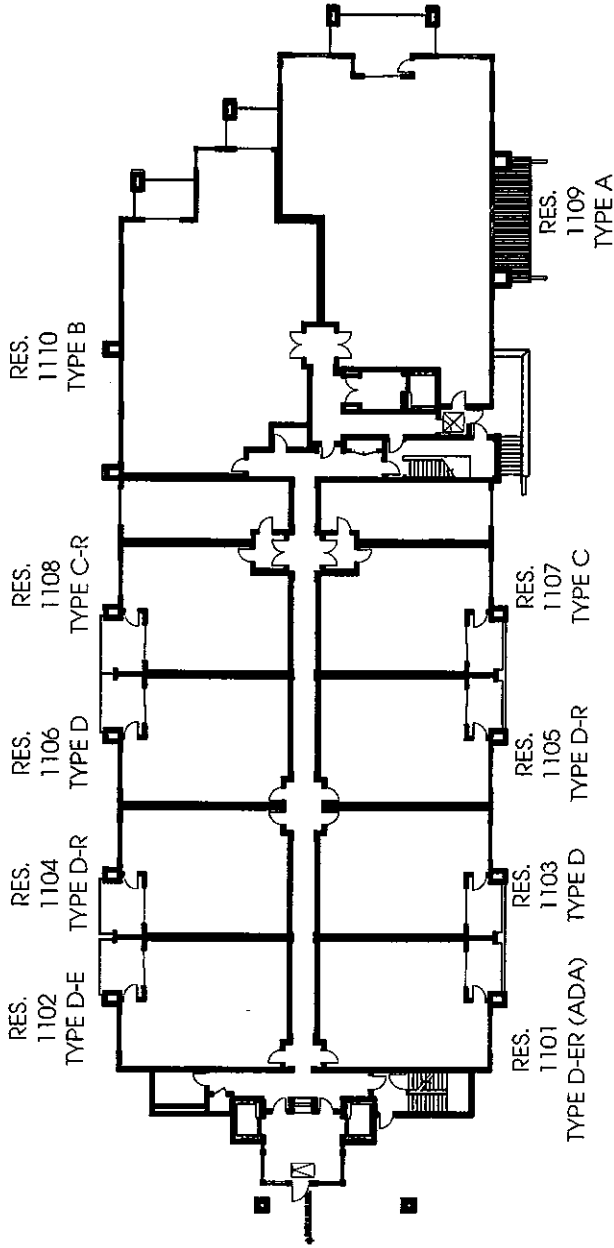
1" = 100' WHEN PRINTED AT 8.5 X 11"

PHASE V  
**SEASONS CONDO PLAT MAP**  
 SEASONS AT SANDPOINT  
 SANDPOINT, IDAHO

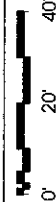
Disclaimer: Nothing of this file, only the Phase V property as shown on the Condominium Plat Map and described in the Supplemental Declaration, Declaration and Exhibit A to the Condominium Property Act, 39A-15, Idaho Code, is intended to be a part of the Condominium Property Act, 39A-15, Idaho Code, Chapter 15, Idaho Code, pursuant to the Declaration, Exhibit A to the Declaration, the Supplemental Declaration, Exhibit A and the Condominium Plat Map. The Declaration has revised Phase V as originally described in the Declaration, and Phase V now consists of what is described in the Supplemental Declaration, Exhibit A and the Condominium Plat Map.



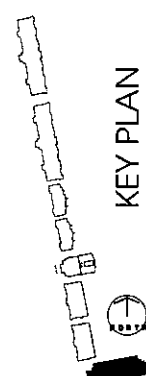




**BUILDING #01: FLOOR PLAN LEVEL 1 (ENTRY LEVEL)**



1" = 40' ARCH. PRINTED AT 8.5 X 11"

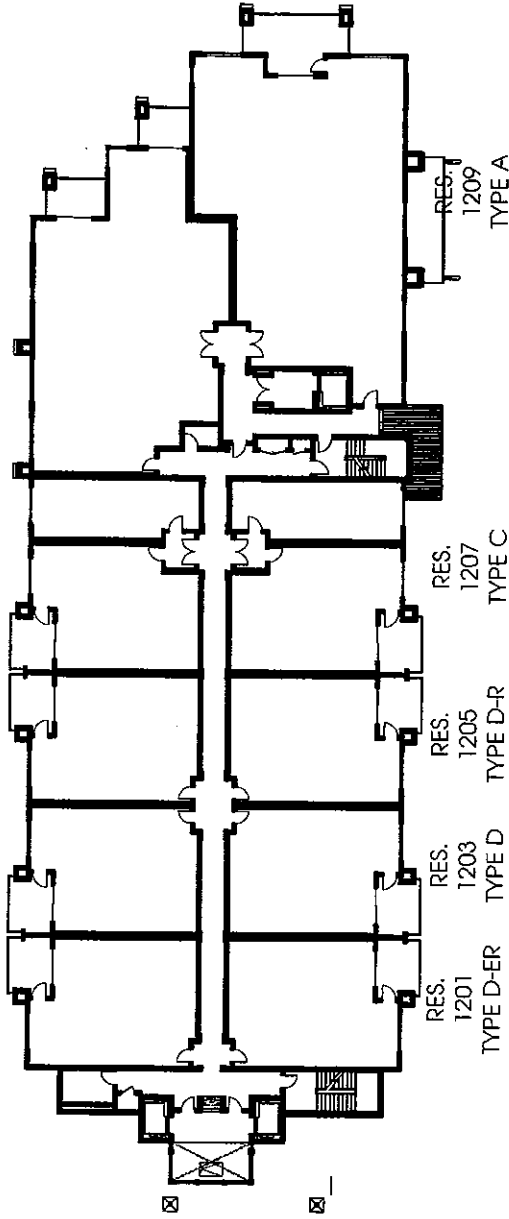


**KEY PLAN**

**PHASE V  
SEASONS CONDO PLAT MAP  
SEASONS AT SANDPOINT  
SANDPOINT, IDAHO**

Disclaimer: Submitting of this form only files Phase V Property as shown on the Condominium Plat Map and described in the Supplemental Declaration to Condominium Unit 101. It is the responsibility of the user and owner to verify the accuracy of the information provided in this Declaration. The user and owner shall be responsible for the accuracy of the information provided in this Declaration. The user and owner shall be responsible for the accuracy of the information provided in this Declaration. The user and owner shall be responsible for the accuracy of the information provided in this Declaration.

RES. 1202 TYPE D-E(ADA)  
 RES. 1204 TYPE D-R  
 RES. 1206 TYPE D  
 RES. 1208 TYPE C-R  
 RES. 1210 TYPE B



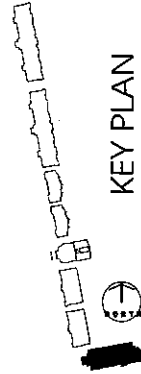
RES. 1201 TYPE D-ER  
 RES. 1203 TYPE D  
 RES. 1205 TYPE D-R  
 RES. 1207 TYPE C  
 RES. 1209 TYPE A



BUILDING #01: FLOOR PLAN LEVEL 2



1" = 40' WHEN PRINTED AT 8.5 X 11"

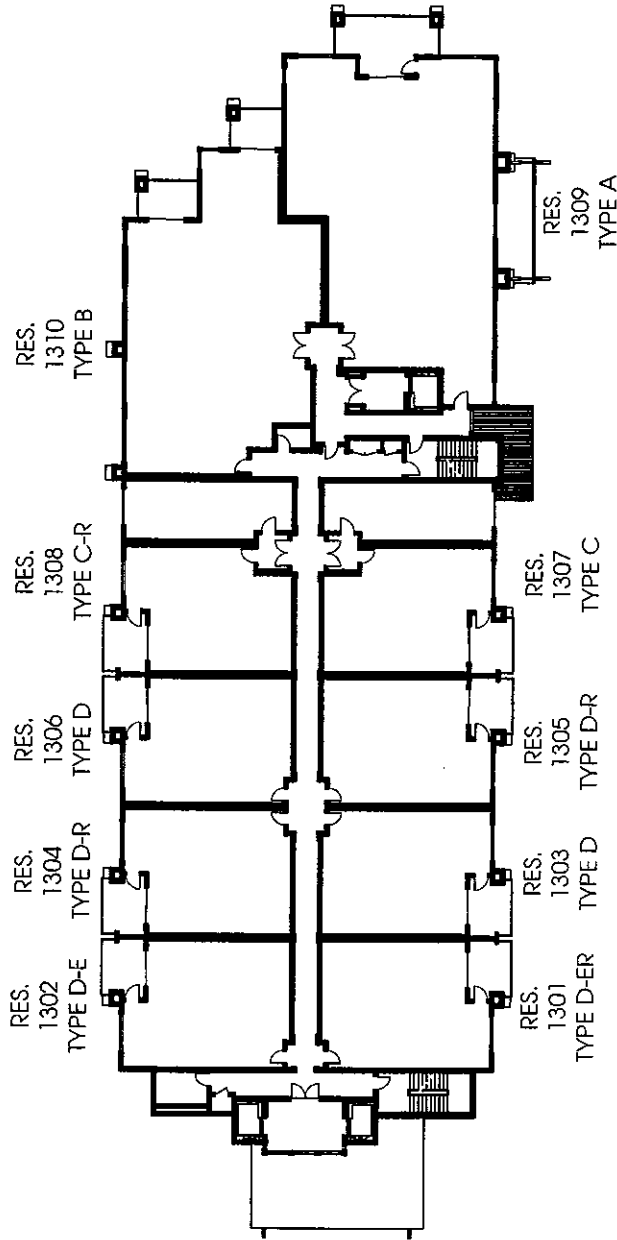


KEY PLAN

PHASE V  
**SEASONS CONDO PLAT MAP**  
 SEASONS AT SANDPOINT  
 SANDPOINT, IDAHO

PAGE 04

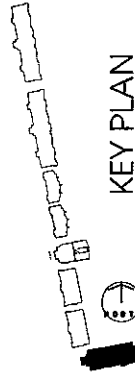
Document is submitted at this time only. The Phase V Property as shown on the Condominium Plat Map and described in the Supplemental Declaration is subject to the final plat map and the final plat map will be submitted to the Idaho State Board of Contract and Property, Inc. (ISBCP) for approval. The final plat map will be submitted to the Idaho State Board of Contract and Property, Inc. (ISBCP) for approval. The final plat map will be submitted to the Idaho State Board of Contract and Property, Inc. (ISBCP) for approval. The final plat map will be submitted to the Idaho State Board of Contract and Property, Inc. (ISBCP) for approval.



BUILDING #01: FLOOR PLAN LEVEL 3



1" = 40' WHEN PRINTED AT 8.5 X 11"



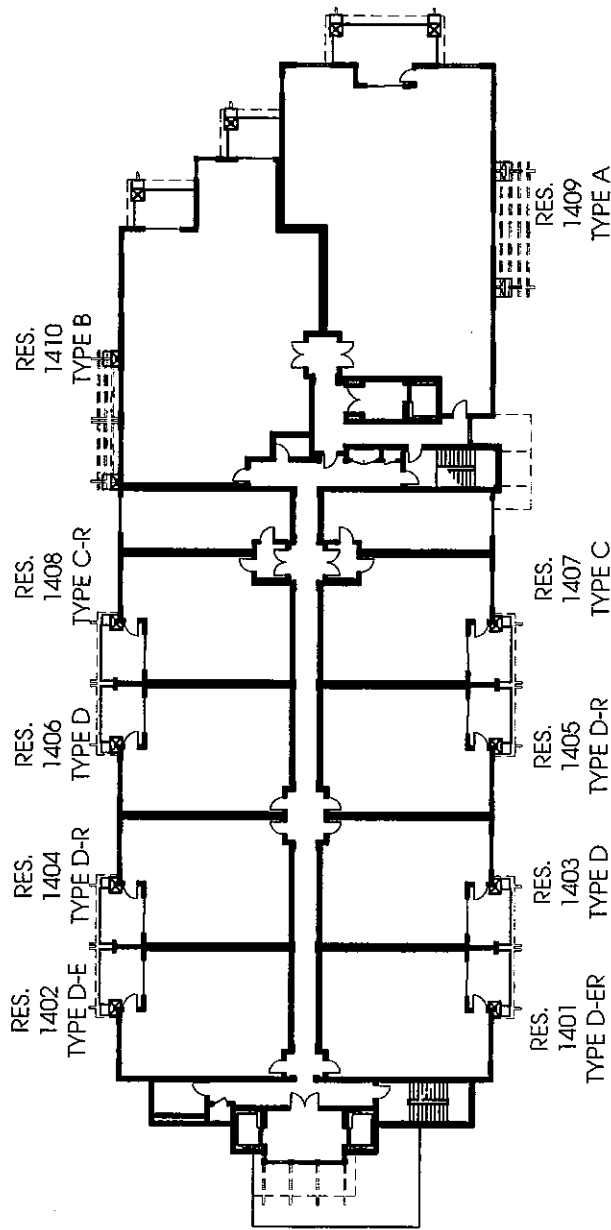
KEY PLAN

PHASE V  
SEASONS CONDO PLAT MAP  
SANDPOINT, IDAHO

Decedent's submission of this map only the Phase V Property as shown on the Condominium Plat Map and described in the Supplemental Declaration to Condominium and Exhibit A to come to the condominium form of use and ownership into the provisions of the Idaho Condominium Property Act, Title 55, Chapter 15, Idaho Code. Pursuant to the Decedent's rights under the Declaration of Condominium, the Decedent has revised Phase V as originally described in the Declaration of Condominium, and these V now consists of what is described in the Supplemental Declaration, Exhibit A and the Condominium Plat Map.

Chancey  
Design Partnership  
Architecture + Planning + Interior Design

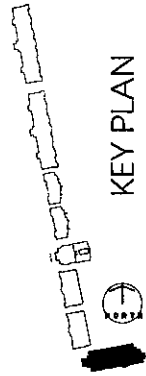
Printed: July 12, 2007



BUILDING #01: FLOOR PLAN LEVEL 4



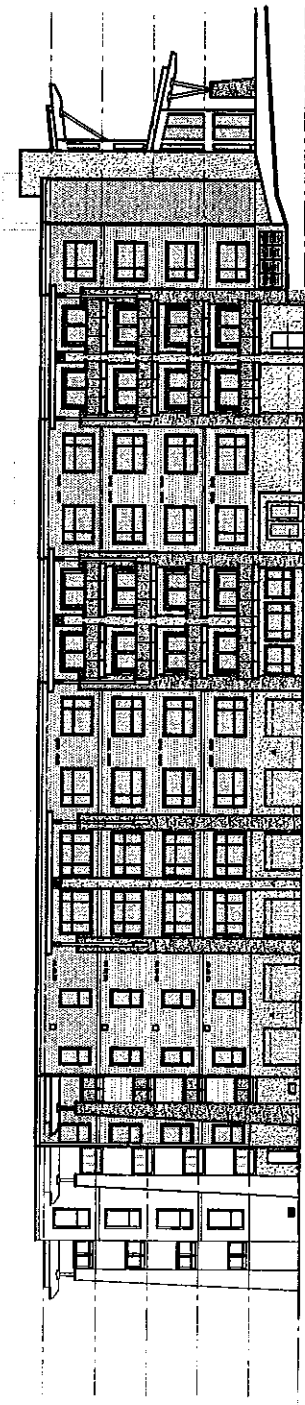
1" = 40' WASH PRINTED AT 8.5 X 11



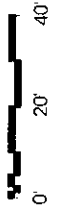
KEY PLAN

Decedent's submission of this plan only the Phase V Property as shown on the Condominium Plat Map and described in the Supplemental Declaration is Condominium and Exhibit A to same to the condominium form of use and ownership to the Condominium of the Idaho Condominium Property Act, Title 55, Chapter 15, Idaho Code. Pursuant to the Decedent's right under the Declaration of Condominium, the Decedent has revised Phase V as originally described in the Declaration of Condominium, and Phase V now consists of what is described in the Supplemental Declaration, Exhibit A and the Condominium Plat Map.

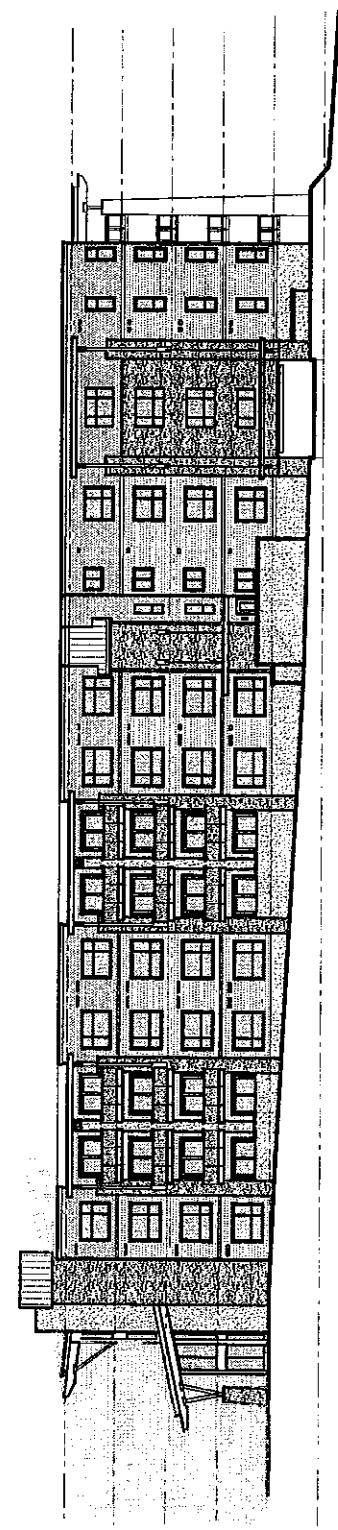
PHASE V  
SEASONS CONDO PLAT MAP  
SEASONS AT SANDPOINT  
SANDPOINT, IDAHO



BUILDING #01: NORTH ELEVATION



1" = 40' WHEN PRINTED AT 8.5 X 11



BUILDING #01: SOUTH ELEVATION



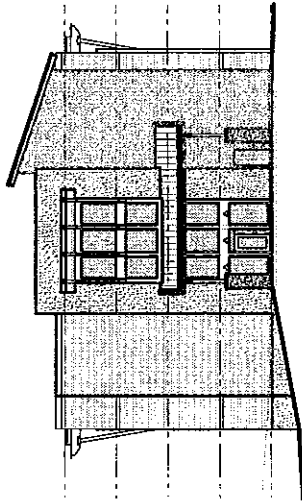
1" = 40' WHEN PRINTED AT 8.5 X 11

PHASE V  
**SEASONS CONDO PLAT MAP**  
 SEASONS AT SANDPOINT  
 SANDPOINT, IDAHO

PAGE 07

Decedent is submitting at this time only the Phase V Property as shown on the Condominium Plat Map and described in the Supplemental Declaration is Condominium and Exhibit A to same to the condominium form of use and occupancy to the provisions of the Idaho Condominium Act, Chapter 15, Idaho Code. As to the Decedent's rights under the Declaration of Condominium, the Condominium Plat Map, the Supplemental Declaration, Exhibit A and the Condominium Plat Map.

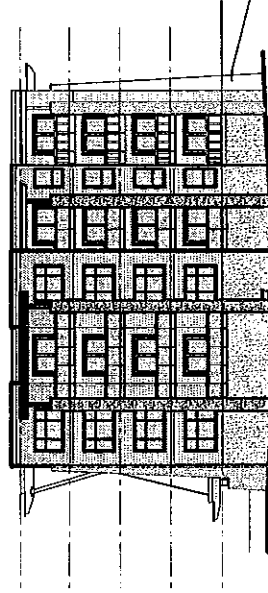
**Chancey**  
 Design Partnership  
 Architecture + Planning + Interior Design  
 Printed: July 12, 2007



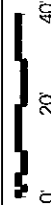
BUILDING #01: WEST ELEVATION



1" = 40' WHEN PRINTED AT 8.5 X 11"



BUILDING #01: EAST ELEVATION

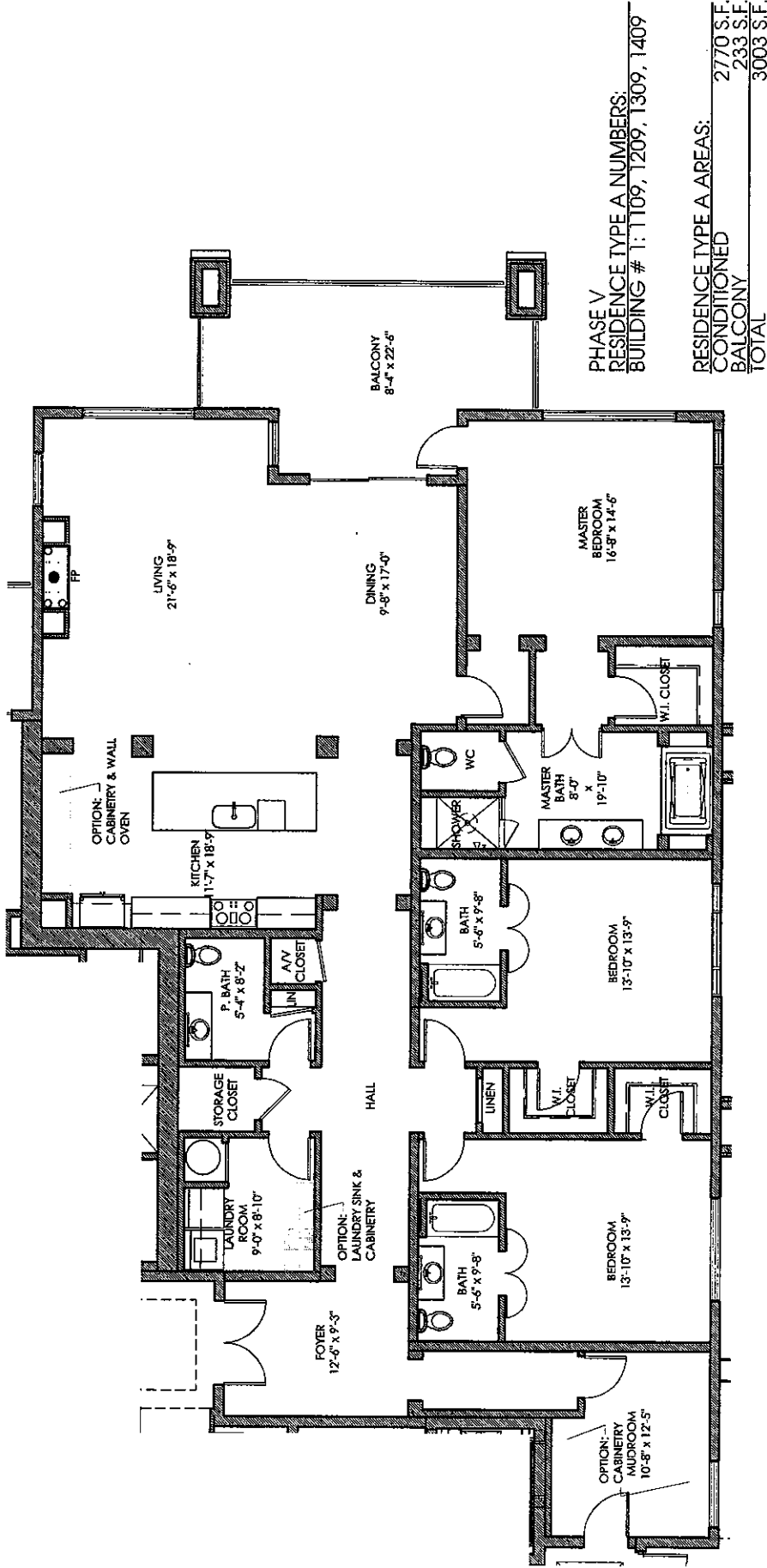


1" = 40' WHEN PRINTED AT 8.5 X 11"

PHASE V  
**SEASONS CONDO PLAT MAP**  
 SEASONS AT SANDPOINT  
 SANDPOINT, IDAHO

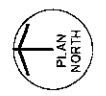
PAGE 08

Decision is binding at this time only for Phase V Property as shown on the Condominium Plat Map and described in the Supplemental Declaration to Condominium Act 10-1, Chapter 12, Idaho Code. Pursuant to the Declaratory Rights under the Declaration of Condominium, the Decedent has irrevocably assigned Phase V as originally described in the Declaration of Condominium, and Phase V now consists of what is described in the Supplemental Declaration, Exhibit A and the Condominium Plat Map.



PHASE V  
RESIDENCE TYPE A NUMBERS:  
BUILDING # 1: 1109, 1209, 1309, 1409

RESIDENCE TYPE A AREAS:  
CONDITIONED 2770 S.F.  
BALCONY 233 S.F.  
TOTAL 3003 S.F.



BUILDING #01: RESIDENCE TYPE A

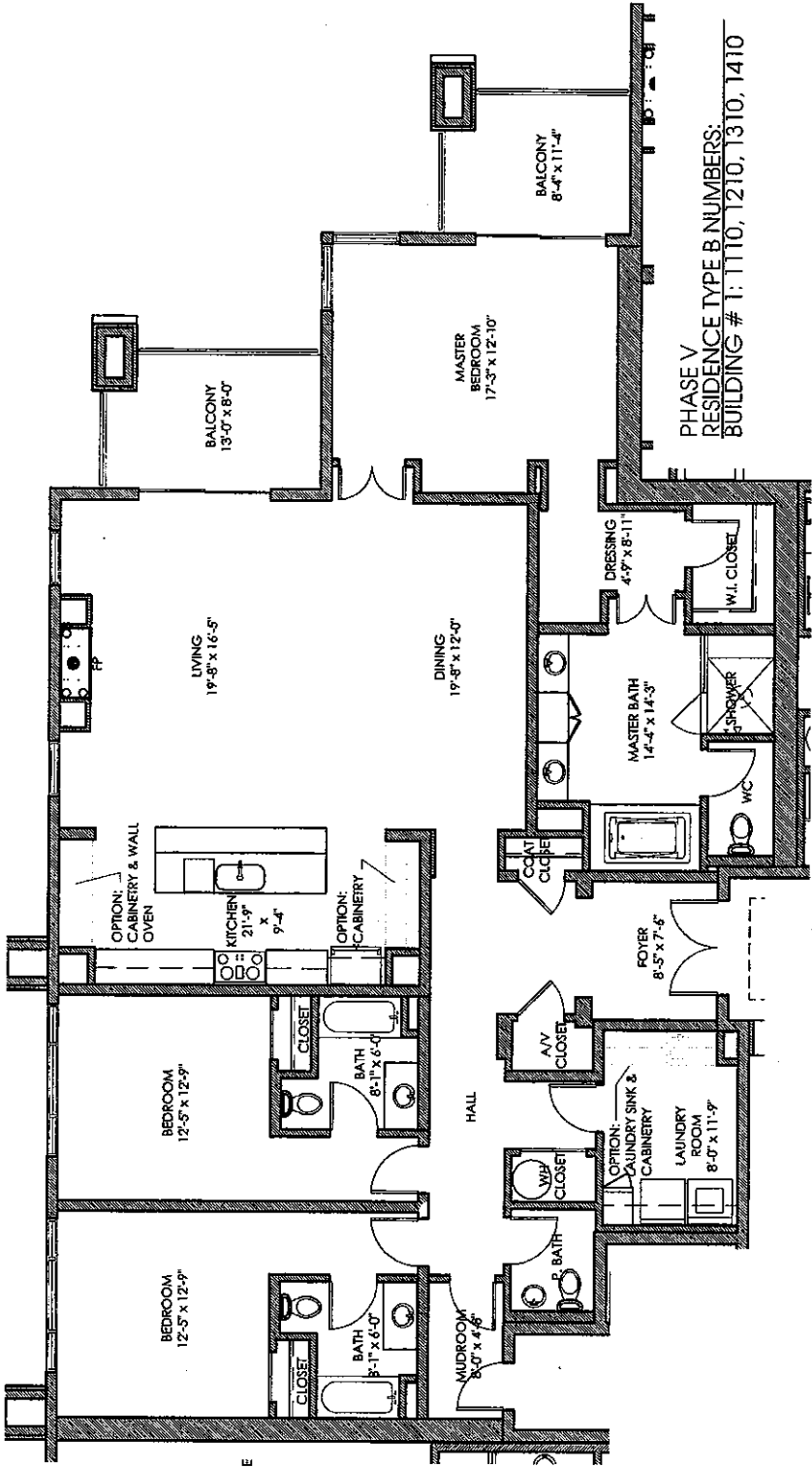
3/32" = 1'-0" WHEN PRINTED AT 8.5 X 11

0 8' 16'

KEY PLAN

Decision is submitted on the fine print of the Phase V Property as shown on the Condominium Plat Map and described in the Supplemental Declaration and the Condominium Declaration. The Condominium Declaration is subject to the provisions of the Idaho Condominium Act, 38A, S.C. Chapter 15, Idaho Code. Pursuant to the Condominium Act, the Condominium Declaration and the Supplemental Declaration are hereby approved and the Condominium Declaration and the Supplemental Declaration are hereby approved and the Condominium Declaration and the Supplemental Declaration are hereby approved.

PHASE V  
**SEASONS CONDO PLAT MAP**  
SEASONS AT SANDPOINT  
SANDPOINT, IDAHO



PHASE V  
RESIDENCE TYPE B NUMBERS:  
BUILDING # 1: 1110, 1210, 1310, 1410

RESIDENCE TYPE B AREAS:  
CONDITIONED 2425 S.F.  
BALCONIES 190 S.F.  
TOTAL 2615 S.F.



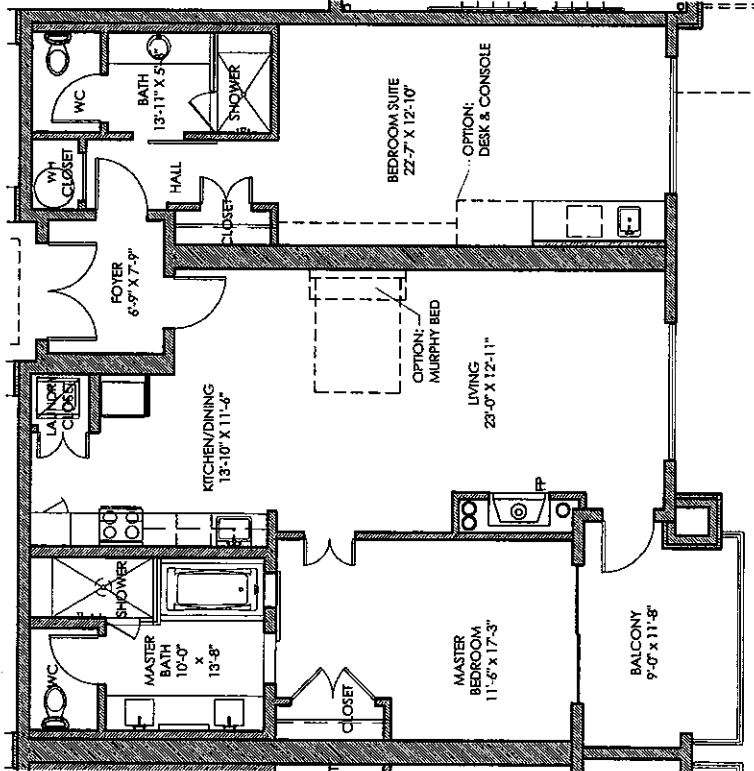
BUILDING #01: RESIDENCE TYPE B

KEY PLAN

Decedent is submitting of this firm only the Phase V Property as shown on the Condominium Plat Map and described in the Supplemental Declaration to Condominium and Subpart A to same to the condominium form of use and ownership in the provisions of the Idaho Condominium Property Act, Title 32, Chapter 15, Idaho Code. In order to file Decedent's signature under the Declaration of Condominium, the Condominium Plat Map and Phase V Property as shown on the Condominium Plat Map and described in the Declaration of Condominium, and Phase V Property as described in the Supplemental Declaration, Subpart A, and the Condominium Plat Map.

PHASE V  
**SEASONS CONDO PLAT MAP**  
SEASONS AT SANDPOINT  
SANDPOINT, IDAHO





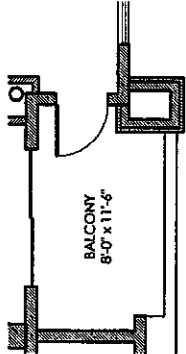
BUILDING #01: RESIDENCE TYPE C



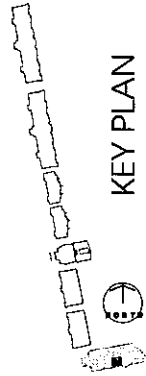
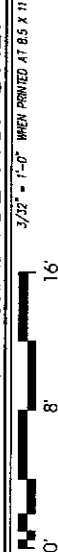
PHASE V  
RESIDENCE TYPE C NUMBERS:  
BUILDING # 1: 1107, 1207, 1307, 1407

RESIDENCES 1207, 1307, 1407 AREAS  
CONDITIONED 1450 S.F.  
BALCONY 110 S.F.  
TOTAL 1560 S.F.

RESIDENCE 1107 AREAS  
CONDITIONED 1450 S.F.  
BALCONY 92 S.F.  
TOTAL 1542 S.F.



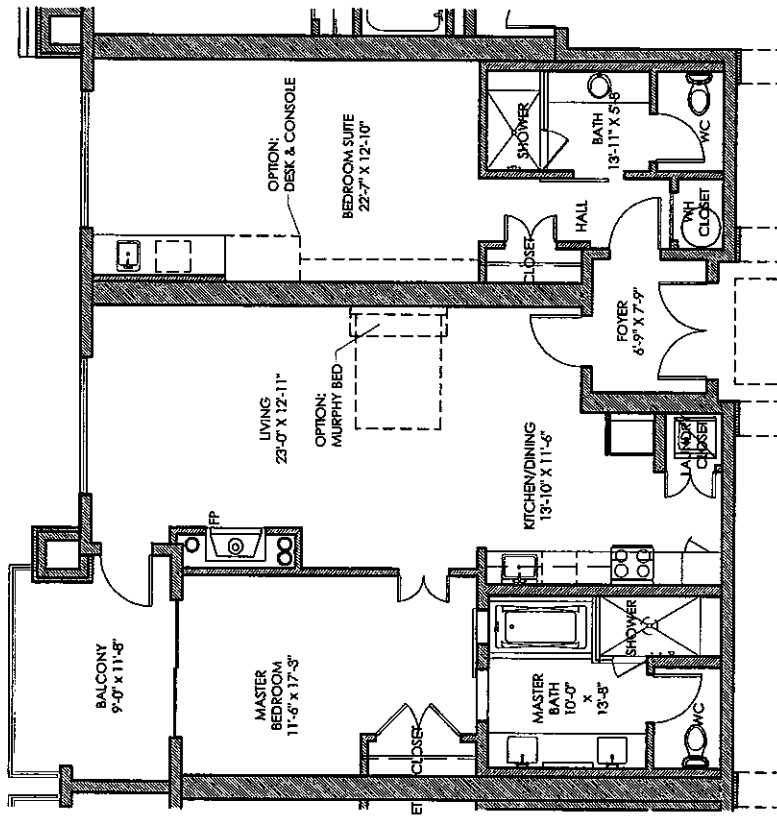
BALCONY @ RESIDENCE 1107 ONLY



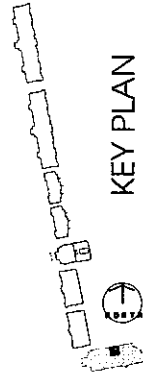
KEY PLAN

PHASE V  
**SEASONS CONDO PLAT MAP**  
SEASONS AT SANDPOINT  
SANDPOINT, IDAHO

Decat is submitting at this time only the Phase V property as shown on the Condominium Plat Map and described in the Supplemental Declaration to Condominium and Dwell A to same to the condominium form of use and operating to the members of the Idaho Condominium Property Act, Title 33, Chapter 13, Idaho Code. Notation to the locations of the units in the Declaration of Condominium, the Condominium Plat Map/Phase V is only as described in the Declaration of Condominium, and Phase V. Your consent of this is described in the Supplemental Declaration, Exhibit A and the Condominium Plat Map.



**BUILDING #01: RESIDENCE TYPE C-R (C-REVERSE)**  
 3/32" = 1'-0" WHEN PRINTED AT 8.5 X 11"



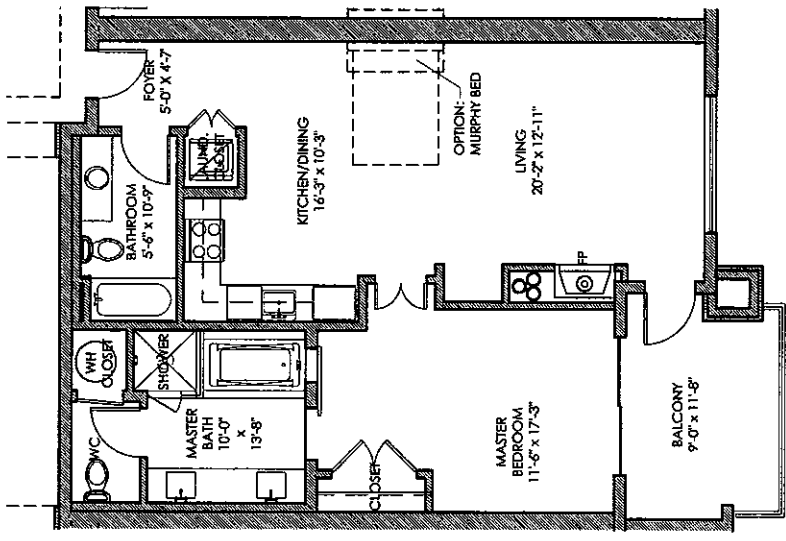
**KEY PLAN**

PHASE V  
 RESIDENCE TYPE C-R NUMBERS:  
 BUILDING # 1: 1108, 1208, 1308, 1408

RESIDENCE TYPE C-R AREAS	1450 S.F.
CONDITIONED	110 S.F.
BALCONY	1560 S.F.
TOTAL	

PHASE V  
**SEASONS CONDO PLAT MAP**  
 SEASONS AT SANDPOINT  
 SANDPOINT, IDAHO

Declaration is submitted of this time only the Phase V property as shown on the Condominium Plat Map and described in the Supplemental Declaration to Condominium and Exhibit A to same to the condominium form of use and operating rules and regulations of the Idaho Condominium Property Act, Title 55, Chapter 15, Article Code. Pursuant to the Declarant's rights under the Declaration of Condominium, the Declarant has reserved Phase V as originally described in the Declaration of Condominium, and Phase V now consists of what is described in the Supplemental Declaration, Exhibit A and the Condominium Plat Map.

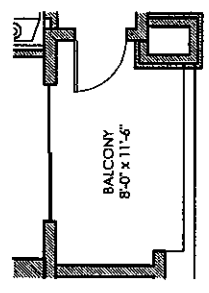


**BUILDING #01: RESIDENCE TYPE D**  
 3/32" = 1'-0" WHEN PRINTED AT 8.5 X 11  
 0' 8' 16'

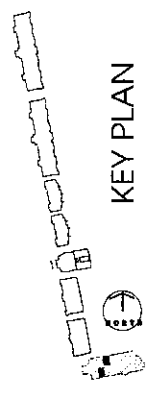
PHASE V  
 RESIDENCE TYPE D NUMBERS:  
 BUILDING # 1: 1103, 1106, 1203, 1206,  
 1303, 1306, 1403, 1406

RESIDENCES 1106, 1203, 1206, 1303,  
 1306, 1403, 1406, AREAS  
 CONDITIONED 928 S.F.  
 BALCONY 110 S.F.  
 TOTAL 1038 S.F.

RESIDENCE 1103 ONLY AREAS  
 CONDITIONED 928 S.F.  
 BALCONY 92 S.F.  
 TOTAL 1020 S.F.



**BALCONY @ RESIDENCE  
 1103 ONLY**  
 3/32" = 1'-0" WHEN PRINTED AT 8.5 X 11  
 0' 8' 16'



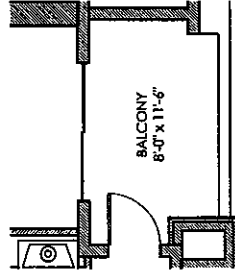
KEY PLAN

Declaration is submitted at this time only the Phase V Property as shown on the Condominium Plat Map and described in the Supplemental Declaration to Condominium and Exhibit A to serve to the condominium form of use and ownership into the provisions of the Idaho Condominium Property Act, Title 55, Chapter 13, Idaho Code. Pursuant to the Declaration rights under the Declaration of Condominium, the Condominium form of use and ownership, the Declaration of Condominium, and Phase V Plan consist of what is described in the Supplemental Declaration, Exhibit A and the Condominium Plat Map.

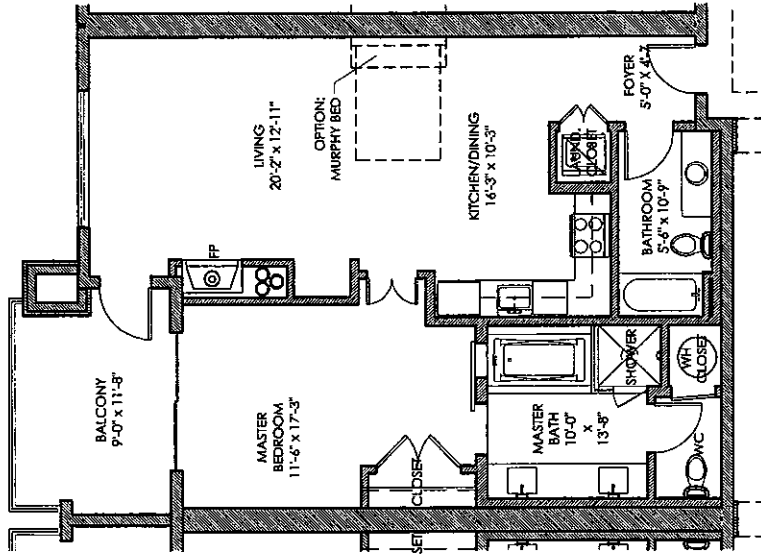
PHASE V  
 RESIDENCE TYPE D-R NUMBERS:  
 BUILDING # 1: 1104, 1105, 1204, 1205,  
 1304, 1305, 1404, 1405

RESIDENCES 1104, 1204, 1205,  
 1304, 1305, 1404, 1405, AREAS  
 CONDITIONED 928 S.F.  
 BALCONY 110 S.F.  
 TOTAL 1038 S.F.

RESIDENCE 1105 ONLY AREAS  
 CONDITIONED 928 S.F.  
 BALCONY 92 S.F.  
 TOTAL 1020 S.F.

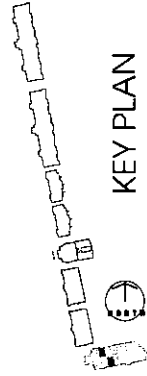


BALCONY @ RESIDENCE  
 1105 ONLY



BUILDING #01: RESIDENCE TYPE D-R (D REVERSE)

3/32" = 1'-0" WHEN PRINTED AT 8.5 X 11



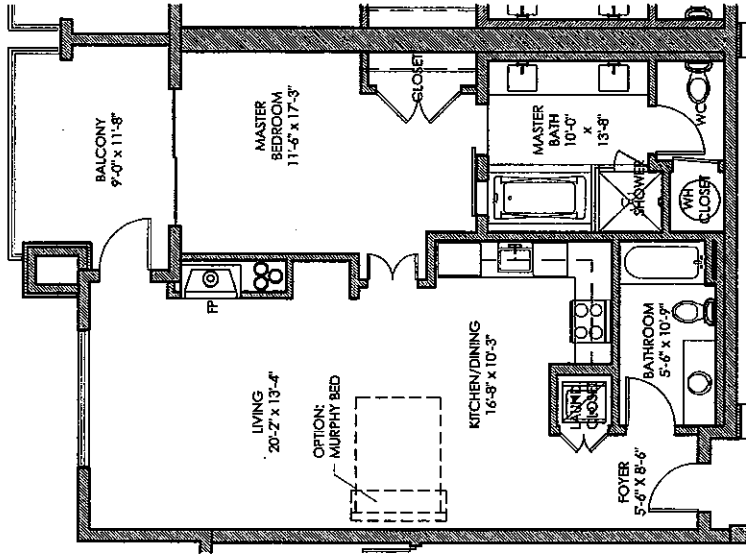
KEY PLAN

PHASE V  
**SEASONS CONDO PLAT MAP**  
 SEASONS AT SANDPOINT  
 SANDPOINT, IDAHO

PAGE 14

Developer is submitting this map and the Phase V Property numbers on this Condominium Plat Map and described in the Supplemental Declaration to comply with the provisions of the Idaho Uniform Condominium Act, which became effective on the date of the Idaho Uniform Condominium Act, 1981, Chapter 15, Idaho Code. Pursuant to the Declaration and the Declaration of Condominium, the Declaration has been filed in the public records of the County of Blaine, Idaho, and the Declaration of Condominium, and those V have created what is described in the Supplemental Declaration, Exhibit A and the Condominium Plat Map.

**Chancey**  
 Design Partnership  
 Architecture + Planning + Interior Design  
 Printed: July 12, 2007



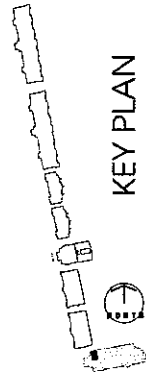
PHASE V  
RESIDENCE TYPE D-E NUMBERS:  
BUILDING # 1: 1102, 1302, 1402

RESIDENCE TYPE D-E AREAS:  
CONDITIONED 946 S.F.  
BALCONY 110 S.F.  
TOTAL 1056 S.F.



BUILDING #01: RESIDENCE TYPE D-E (D END UNIT)

3/32" = 1'-0" WHEN PRINTED AT 8.5 X 11"

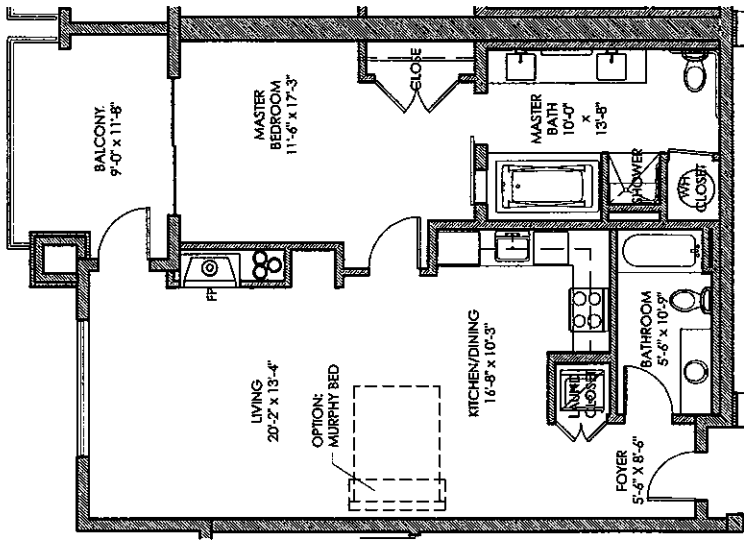


KEY PLAN

PHASE V  
**SEASONS CONDO PLAT MAP**

SEASONS AT SANDPOINT  
SANDPOINT, IDAHO PAGE 15

Declaration is submitted of this plan only the Phase V Property as shown on this Condominium Plat Map and described in the Supplemental Declaration to Condominium and Exhibit A, to come to the condominium form of use and ownership into the possession of the living Condominium Property Act, Title 33, Chapter 15, Idaho Code. Pursuant to the Declarant's rights under the Declaration of Condominium, the Declarant has reserved Phase V as originally described in the Declaration of Condominium, and Phase V now consists of what is described in the Supplemental Declaration, Exhibit A and the Condominium Plat Map.

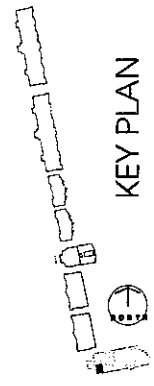


PHASE V  
RESIDENCE TYPE D-E(ADA) NUMBERS:  
BUILDING # 1: 1202

RESIDENCE TYPE D-E(ADA) AREAS  
CONDITIONED 946 S.F.  
BALCONY 110 S.F.  
TOTAL 1056 S.F.



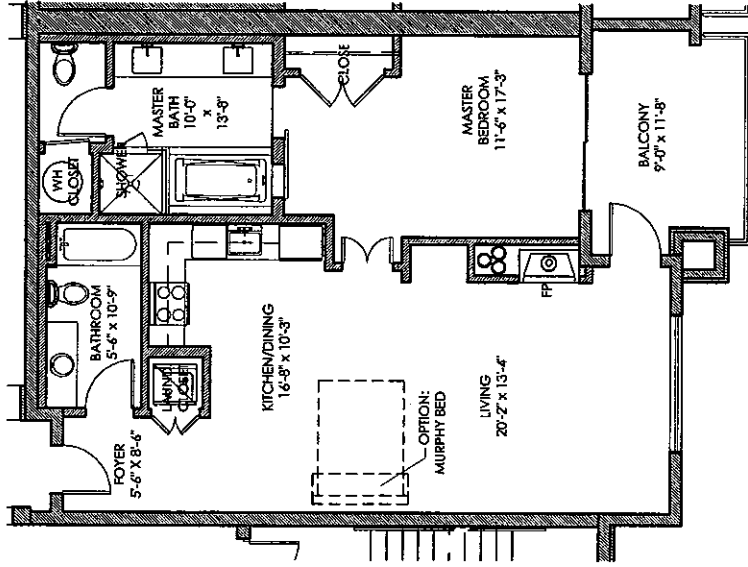
BUILDING #01: RESIDENCE TYPE D-E(ADA)  
3/32" = 1'-0" WHEN PRINTED AT 8.5 X 11"



KEY PLAN

PHASE V  
**SEASONS CONDO PLAT MAP**  
SEASONS AT SANDPOINT  
SANDPOINT, IDAHO

Document is submitted of this firm only for Phase V Property as shown on the Condominium Plat Map and described in the Supplemental Declaration to Condominium Plat Map. It is not to be construed as a commitment by the firm to provide any other services under the Declaration of Condominium, the Declaration has been prepared by the firm and is subject to the Declaration of Condominium, and Phase V does not constitute what is described in the Supplemental Declaration, Exhibit A and the Condominium Plat Map.



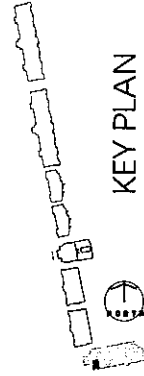
PHASE V  
 RESIDENCE TYPE D-ER NUMBERS:  
 BUILDING # 1: 1201, 1301, 1401

RESIDENCE TYPE D-ER AREAS:  
 946 S.F.  
 110 S.F.  
 BALCONY  
 1066 S.F.  
 TOTAL



BUILDING #01: RESIDENCE TYPE D-ER (D END UNIT, REVERSE)

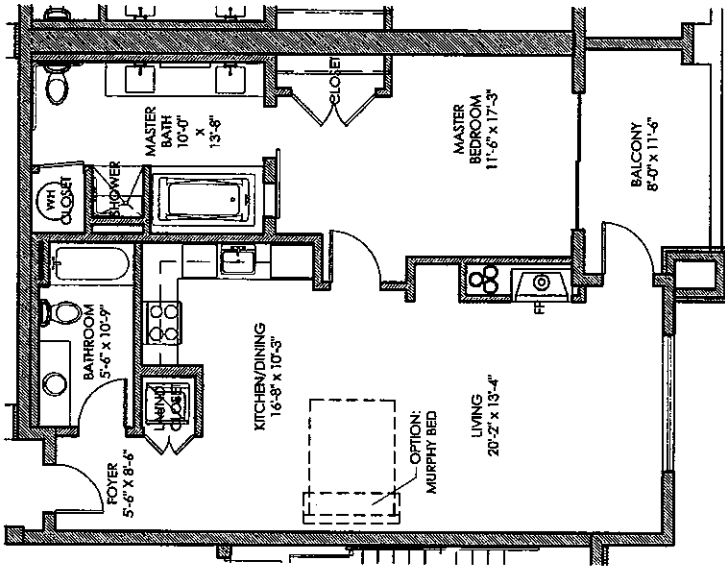
3/32" = 1'-0" WHEN PRINTED AT 8.5 X 11"



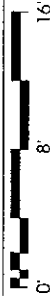
KEY PLAN

Designer is submitting this plan for Phase V (Property as shown on the Condominium Plat Map) as described in the Supplemental Declaration and is submitting this plan for Phase V (Property as shown on the Condominium Plat Map) as described in the Supplemental Declaration as required by the Idaho State Code, Chapter 15, Idaho Code, in order to file this plan with the Department of Commerce. The Declaration has revised Phase V as originally described in the Declaration of Condominium, and Phase V now consists of what is described in the Supplemental Declaration, Exhibit A and the Condominium Plat Map.

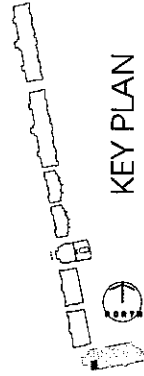
PHASE V  
**SEASONS CONDO PLAT MAP**  
 SEASONS AT SANDPOINT  
 SANDPOINT, IDAHO



BUILDING #01: RESIDENCE TYPE D-ER (ADA)



3/32" = 1'-0" WHEN PRINTED AT 8.5 X 11"



KEY PLAN

PHASE V  
RESIDENCE TYPE D-ER (ADA) NUMBERS:  
BUILDING # 1: 1101

RESIDENCE TYPE D-ER(ADA) AREAS: CONDITIONED	946 S.F.
BALCONY	92 S.F.
<b>TOTAL</b>	<b>1056 S.F.</b>

# PHASE V SEASONS CONDO PLAT MAP

SEASONS AT SANDPOINT  
SANDPOINT, IDAHO

PAGE 18

Disclaimer: A copy of this map and the Phase V Property as shown on this Condominium Plat Map and described in the Supplemental Declaration to Condominium and Exhibit A is to serve as the condominium form of use and occupancy for the residence of the lot. This Declaration is subject to the terms, conditions and restrictions set forth in the Declaration of Condominium, the Condominium Property Act, Title 38, Chapter 15, Idaho Code. In addition to the Declaration of Condominium, the Declaration has revised Phase V as originally described in the Declaration of Condominium, and those provisions which are described in the Supplemental Declaration, Exhibit A and the Condominium Plat Map.

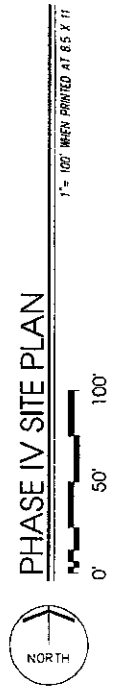
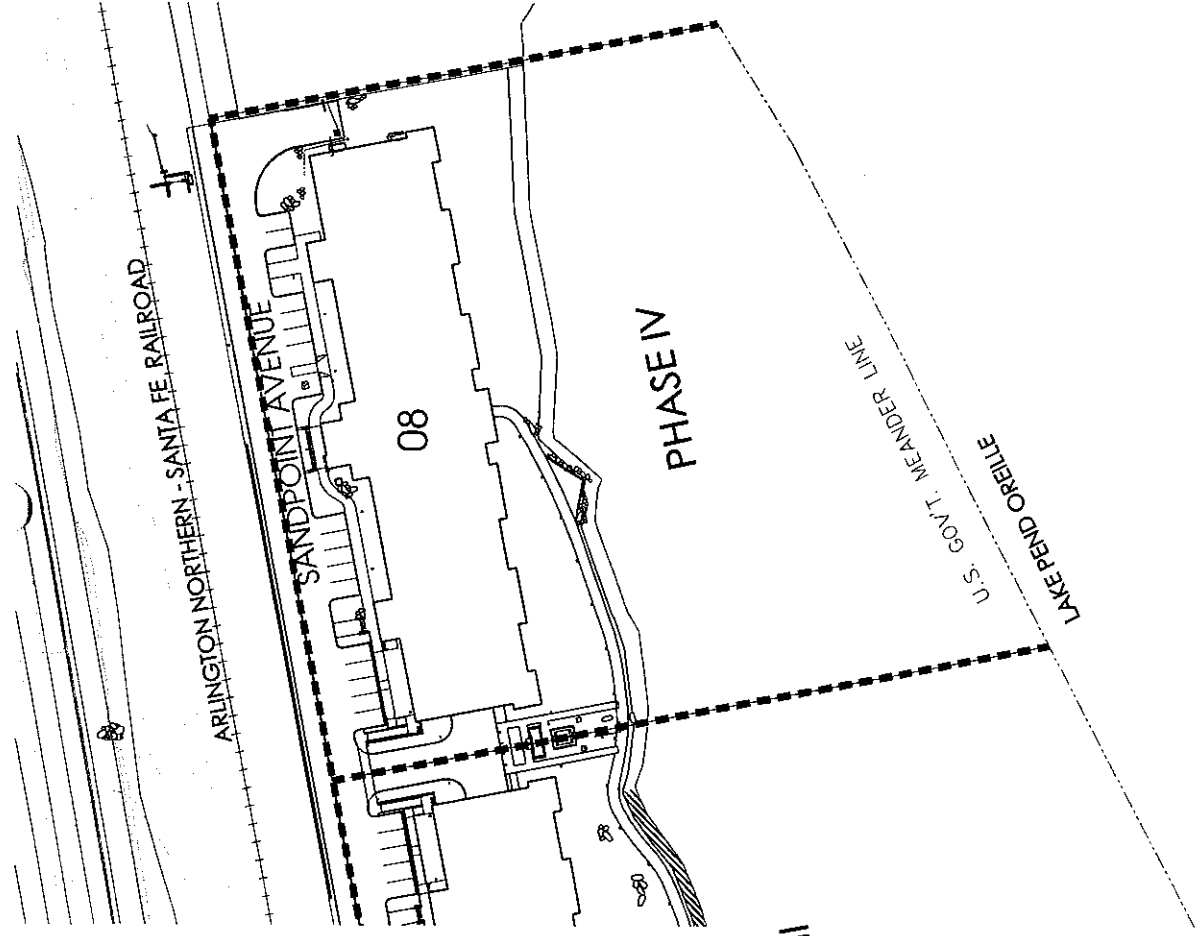
**Chancey**  
**Design Partnership**  
Architecture + Planning + Interior Design  
Printed: July 12, 2007



**EXHIBIT B**

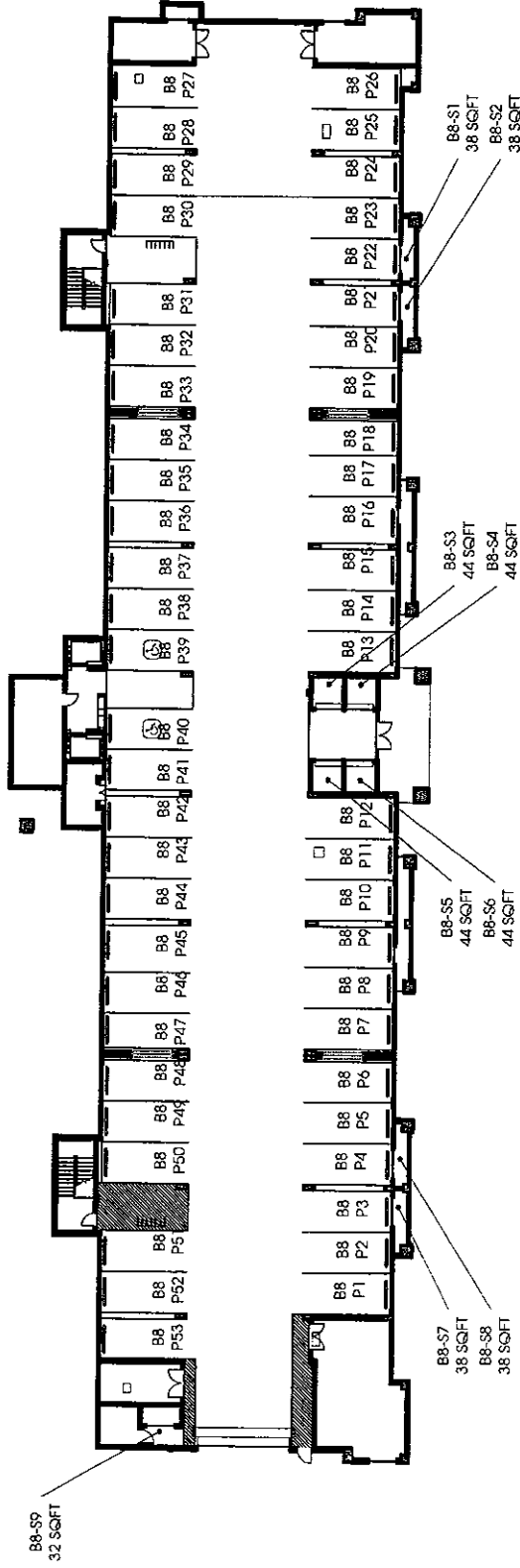
**Phase IV**

**Condominium Plat Map**



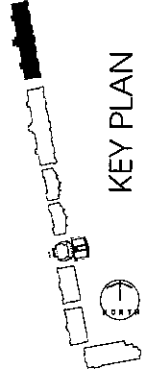
PHASE IV  
**SEASONS CONDO PLAT MAP**  
 SEASONS AT SANDPOINT  
 SANDPOINT, IDAHO

Decedent is submitting at this time only the Phase IV Property as shown on this Condominium Plat Map and described in the Supplemental Declaration to Condominium and Exhibit A, to same, to the condominium form of use and assignment into the provisions of the Idaho Condominium Property Act, Title 55, Chapter 15, Idaho Code. Pursuant to the Decedent's rights under the Declaration of Condominium, the Decedent has revised Phases IV as originally described in the Declaration of Condominium, and Phases IV now consists of what is described in the Supplemental Declaration, Exhibit A and the Condominium Plat Map.



**BUILDING #08: FLOOR PLAN PARKING LEVEL**

1" = 40' WHEN PRINTED AT 25 X 11"



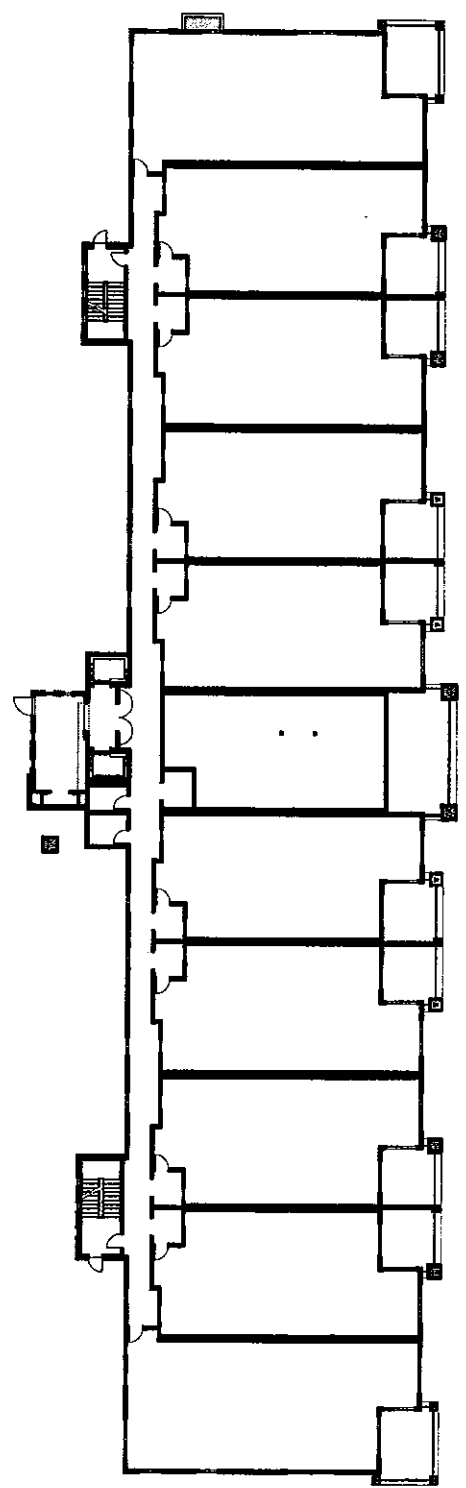
**KEY PLAN**

Declared in submitting of this plan only the Phases IV Property as shown on the Condominium Plat Map and described in the Statements of Intentions to Construct a Condominium in the Declaration of Condominium, Chapter 15, Idaho Code, Pursuant to the Declaration of Condominium, the Declaration of Condominium, the Declaration of Condominium, the Declaration of Condominium, and Phases IV now consists of what is described in the Supplemental Declaration, Exhibit A and the Condominium Plat Map.

**PHASE IV**  
**SEASONS CONDO PLAT MAP**  
 SEASONS AT SANDPOINT  
 SANDPOINT, IDAHO

Owner is submitting at this time only the Phase IV Property as shown on this Condominium Plat Map and described in the Supplemental Declaration to Condominium and Exhibit A, in some to the condominium form of use and ownership with the provisions of the Idaho Condominium Property Act, Title 55, Chapter 15, Idaho Code. Pursuant to the Declarant's rights under the Declaration of Condominium, the Declarant has reserved Phase IV as originally described in the Declaration of Condominium, and Phase IV now consists of what is described in the Supplemental Declaration, Exhibit A and the Condominium Plat Map.

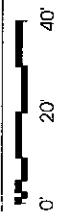
**PHASE IV  
SEASONS CONDO PLAT MAP  
SEASONS AT SANDPOINT  
SANDPOINT, IDAHO**  
PAGE 03



UNIT TYPE	UNIT TYPE	UNIT TYPE	UNIT TYPE	UNIT TYPE	UNIT TYPE	UNIT TYPE	UNIT TYPE	UNIT TYPE	UNIT TYPE	UNIT TYPE
8101	8102	8103	8104	8105	8106	8107	8108	8109	8110	8111
TYPE A	B1	TYPE BR	UNIT TYPE	UNIT TYPE	UNIT TYPE	UNIT TYPE	UNIT TYPE	UNIT TYPE	UNIT TYPE	UNIT TYPE
			TYPE B	B1-R	TYPE C (FIRST LEVEL)	B1	TYPE BR	TYPE B	TYPE	TYPE AR



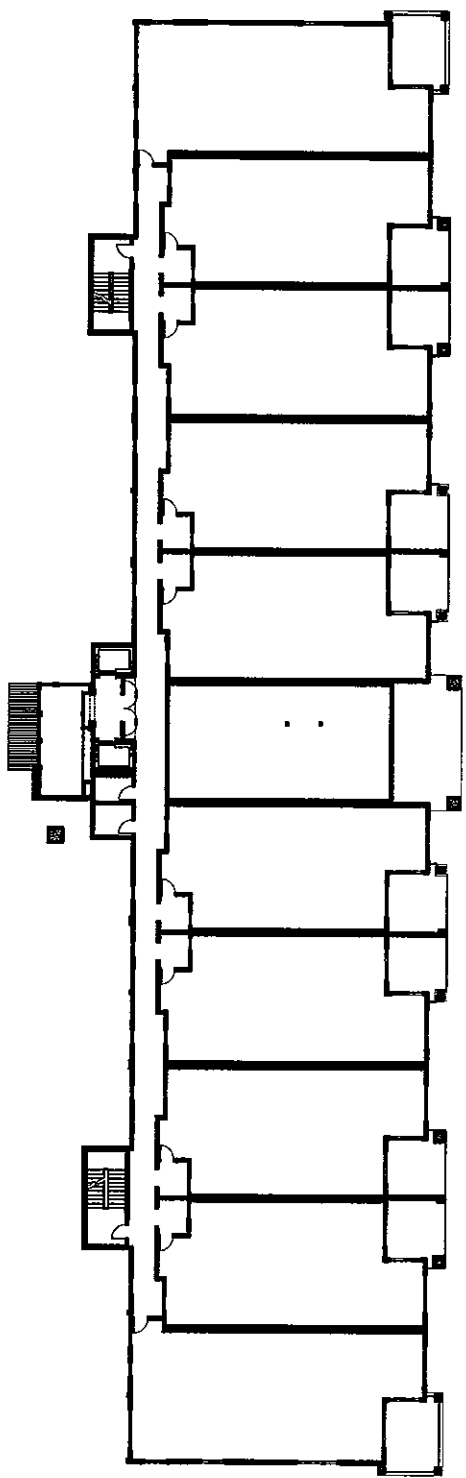
**BUILDING #08: FLOOR PLAN LEVEL 1 (ENTRY LEVEL)**



1" = 40' WHEN PRINTED AT 8.5 X 11"



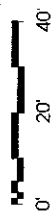
**KEY PLAN**



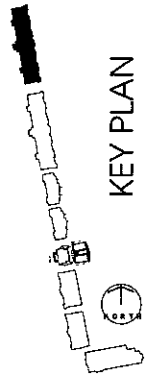
8201	UNIT A	UNIT	8202	UNIT B1	UNIT	8203	UNIT BR	UNIT	8204	UNIT B	UNIT	8205	UNIT B1-R	UNIT	8206	UNIT C	UNIT	8207	UNIT B1	UNIT	8208	UNIT BR	UNIT	8209	UNIT B	UNIT	8210	UNIT B1-R	UNIT	8211	UNIT AR	UNIT
------	--------	------	------	---------	------	------	---------	------	------	--------	------	------	-----------	------	------	--------	------	------	---------	------	------	---------	------	------	--------	------	------	-----------	------	------	---------	------



**BUILDING #08: FLOOR PLAN LEVEL 2**



1" = 40' WHEN PRINTED AT 8.5 X 11"

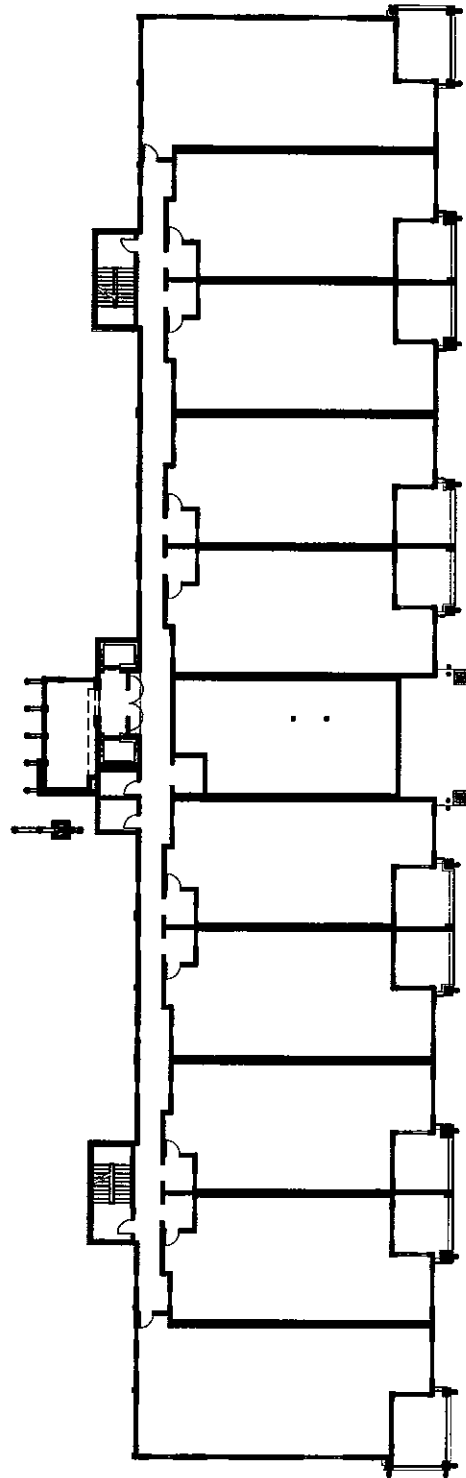


**KEY PLAN**

**PHASE IV SEASONS CONDO PLAT MAP**

SEASONS AT SANDPOINT SANDPOINT, IDAHO

Discorzi is submitting at this time only the Phase IV Property as shown on this Condominium Plat Map and described in the Supplemental Declaration to Condominium and Exhibit A to the Condominium Declaration. It is intended to be used as a preliminary plat map and is not intended to be used for the construction of the project. The information shown on this map is preliminary and is subject to change without notice. The information shown on this map is not intended to be used for the construction of the project. The information shown on this map is not intended to be used for the construction of the project. The information shown on this map is not intended to be used for the construction of the project.

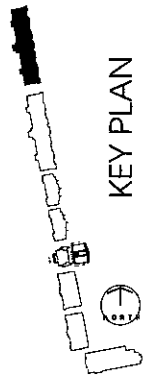
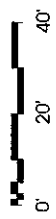


8301	UNIT	TYPE A	HC	8302	UNIT	TYPE B1	8303	UNIT	TYPE BR	8304	UNIT	TYPE B	8305	UNIT	TYPE	B1-R	8306	UNIT	TYPE C	(FIRST LEVEL)	8307	UNIT	TYPE B1	8308	UNIT	TYPE BR	8309	UNIT	TYPE B	8310	UNIT	TYPE B1-R	8311	UNIT	TYPE AR
------	------	--------	----	------	------	---------	------	------	---------	------	------	--------	------	------	------	------	------	------	--------	---------------	------	------	---------	------	------	---------	------	------	--------	------	------	-----------	------	------	---------



**BUILDING #08: FLOOR PLAN LEVEL 3**

1" = 40' WHEN PRINTED AT 8.5 X 11"



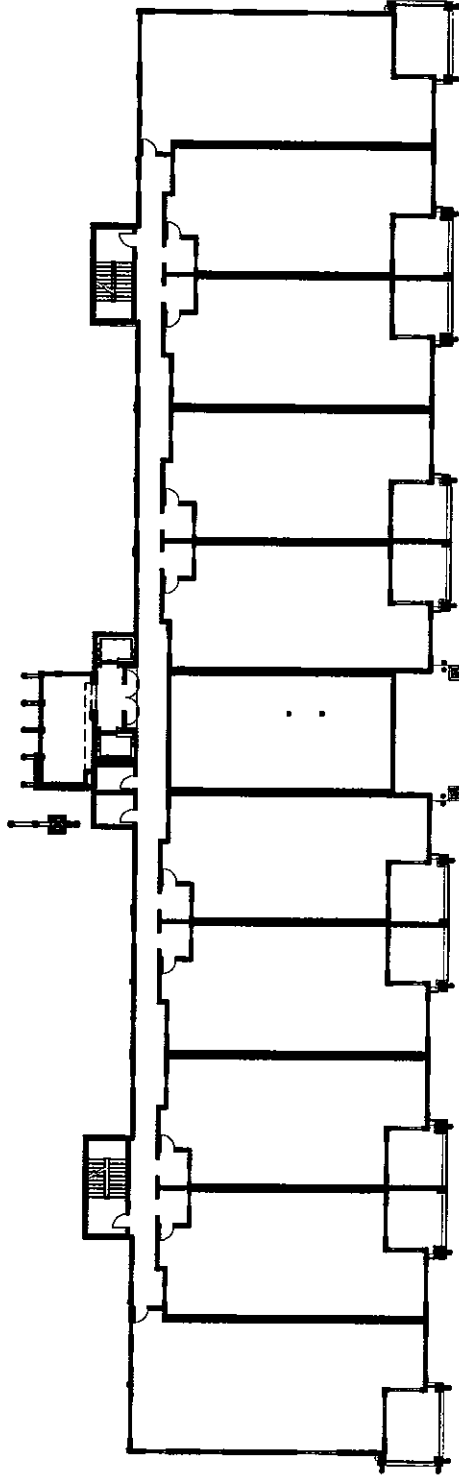
**KEY PLAN**

**PHASE IV  
SEASONS CONDO PLAT MAP**

SEASONS AT SANDPOINT  
SANDPOINT, IDAHO

PAGE 05

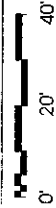
Developer is submitting at this time only the Phase IV Property as shown on this Condominium Plat Map and described in the Supplemental Declaration to Condominium and Exhibit A to same to the condominium form of use and ownership in the provisions of the Idaho Condominium Property Act, Title 55, Chapter 15, Idaho Code. Pursuant to the Declaration's rights under the Declaration of Condominium, the Declaration has retained Phase IV as originally described in the Declaration of Condominium, and Phase IV now consists of what is described in the Supplemental Declaration, Exhibit A and the Condominium Plat Map.



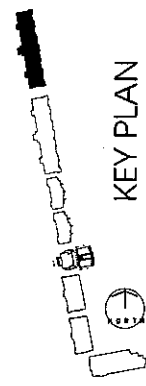
UNIT	UNIT	UNIT	UNIT	UNIT	UNIT	UNIT	UNIT	UNIT	UNIT
8401	8402	8403	8404	8405	8407	8408	8409	8410	8411
TYPE A	TYPE B1	TYPE BR	TYPE B	TYPE B1-R	TYPE C (SECOND LEVEL)	TYPE B1	TYPE BR	TYPE B	TYPE AR



**BUILDING #08: FLOOR PLAN LEVEL 4**

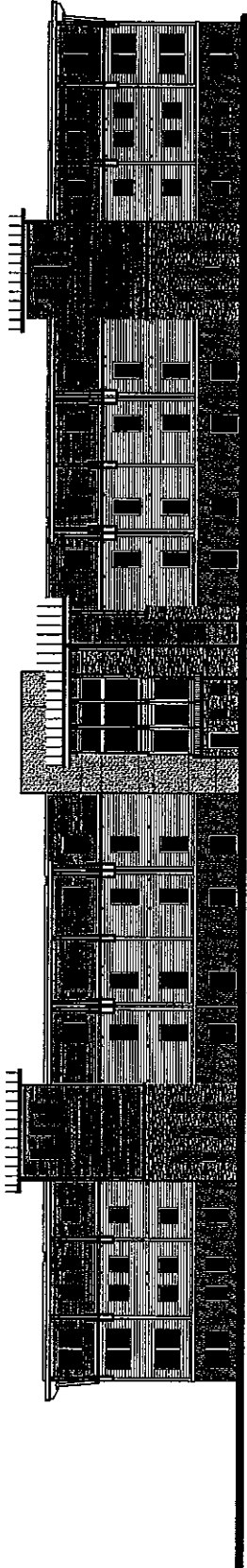


1" = 40' WHEN PRINTED AT 8.5 x 11"

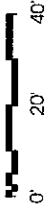


**KEY PLAN**

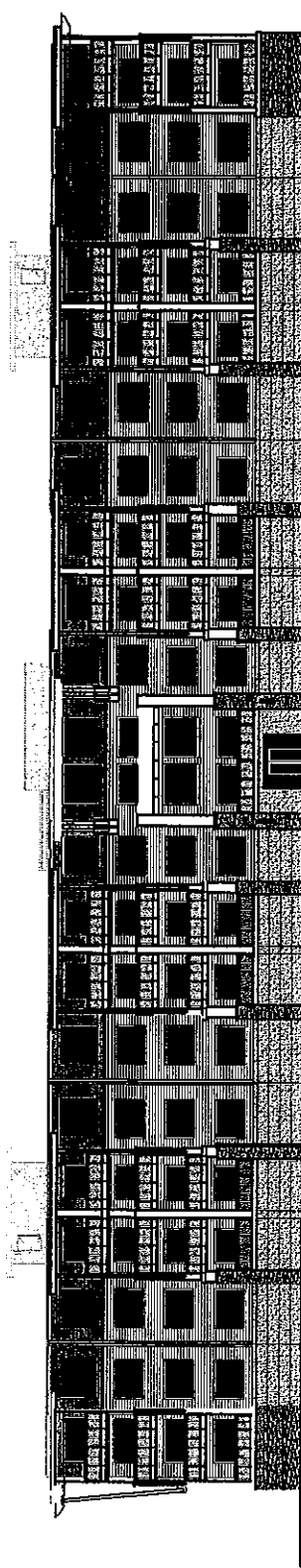
Declaration is submitted in this filing only the Phase IV Property as shown on this Condominium Plat Map and described in the Supplemental Declaration to Condominium and Exhibit A to come to the consummation of sale and recorded with the provisions of the Idaho Condominium Property Act, Title 55, Chapter 15, Idaho Code. Pursuant to the Declaration of Condominium, the Declaration of Condominium, the Declaration has revised Phase IV as originally described in the Declaration of Condominium, and Phases IV now consists of what is described in the Supplemental Declaration, Exhibit A and the Condominium Plat Map.



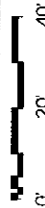
BUILDING #08: TYPICAL WEST ELEVATION



1" = 40' WHEN PRINTED AT 8.5 X 11



BUILDING #08: TYPICAL EAST ELEVATION



1" = 40' WHEN PRINTED AT 8.5 X 11

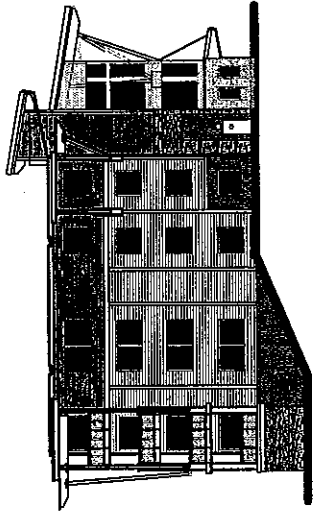
PHASE IV  
SEASONS CONDO PLAT MAP

SEASONS AT SANDPOINT  
SANDPOINT, IDAHO

PAGE 07

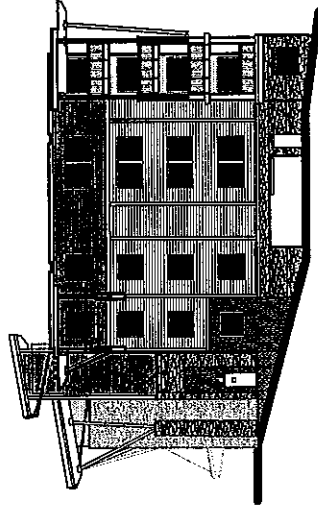
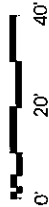
Decedent is submitting this map only the Phase IV Property as shown on this Condominium Plat Map and described in the Supplemental Declaration to Condominium and Exhibit A to same to the condominium form of use and ownership in the provisions of the Idaho Condominium Property Act, Title 55, Chapter 15, Idaho Code. Pursuant to the Decedent's rights under the Declaration of Condominium, the Decedent has reserved Phase IV or originally described in the Declaration of Condominium, and Phase IV now consists of what is described in the Supplemental Declaration, Exhibit A and the Condominium Plat Map.





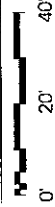
BUILDING #08: TYPICAL NORTH ELEVATION

1" = 40' WHEN PRINTED AT 8.5 X 11



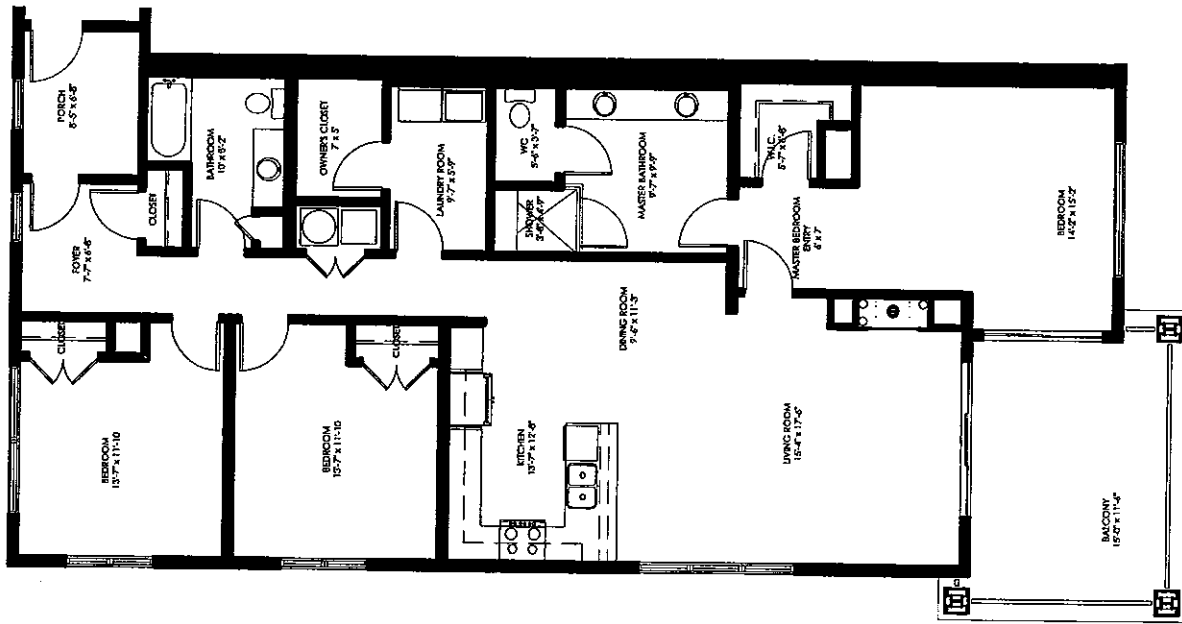
BUILDING #08: TYPICAL SOUTH ELEVATION

1" = 40' WHEN PRINTED AT 8.5 X 11



PHASE IV  
SEASONS CONDO PLAT MAP  
SEASONS AT SANDPOINT  
SANDPOINT, IDAHO

Decemant is submitting at this time only the Phases IV Property as shown on this Condominium Plat Map and described in the Supplement of the Idaho Condominium Project's Plat, File, SS Chapter 15, Idaho Code Pursuant to the Decemant's rights under the Declaration of Condominium, the Decemant has reserved Phases IV as originally described in the Declaration of Condominium, and Phases IV now consists of what is described in the Supplemental Declaration, Exhibit A and the Condominium Plat Map.



PHASE IV  
 UNIT TYPE A NUMBERS:  
 BUILDING # 8: 8101  
 BUILDING # 8: 8201  
 BUILDING # 8: 8401

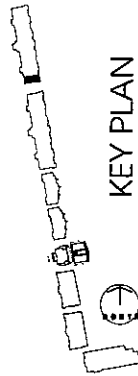
UNIT TYPE A AREAS:  
 UNIT TYPE A 1668 S.F.  
 UNIT TYPE A - BALCONY 157 S.F.  
 TOTAL 1825 S.F.



BUILDING #08: UNIT A



1/32" = 1'-0" WHEN PRINTED AT 8.5 X 11"

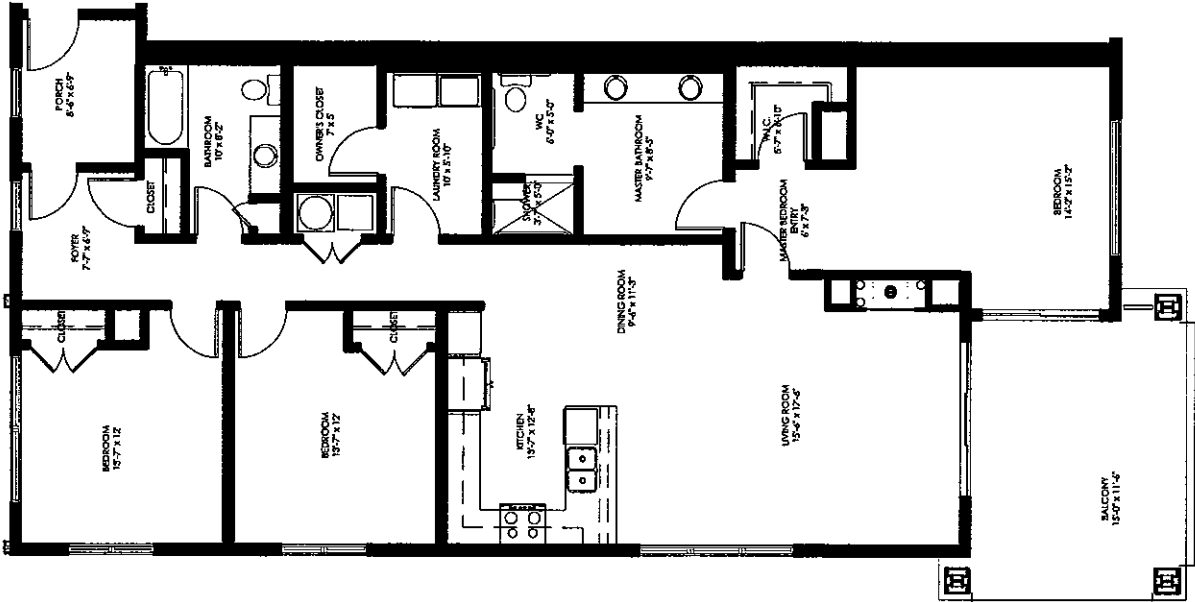


KEY PLAN

Contract is submitted at this time only the Phase IV Property as shown on the Condominium Plat Map and described in the Supplement to the Declaration of Condominium, and the Condominium Property Act, Title 53, Chapter 15, Idaho Code, and the provisions of the Idaho Condominium Property Act, Title 53, Chapter 15, Idaho Code, shall apply. The Unit is located in the Phase IV of the Declaration of Condominium, the Declaration has been filed in the Declaration of Condominium, and the Condominium Plat Map, and Phase IV now consists of what is described in the Supplemental Declaration, Exhibit A and the Condominium Plat Map.

PHASE IV  
**SEASONS CONDO PLAT MAP**  
 SEASONS AT SANDPOINT  
 SANDPOINT, IDAHO

9/13/2007 10:40 AM 2007 8:42 AM P:\2007\104007\reg\reg\004 Drawings\1st Condo Dec\dwg (Rev) Phase IV.dwg 3-12 Unit A Floor Plan Unit A.dwg



PHASE IV  
 UNIT TYPE A HC NUMBERS:  
 BUILDING # 8: 8301

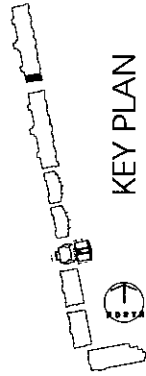
UNIT TYPE A HC AREAS:  
 UNIT TYPE A HC 1668 S.F.  
 UNIT TYPE A HC - BALCONY 157 S.F.  
 TOTAL 1825 S.F.



BUILDING #08: UNIT A HC



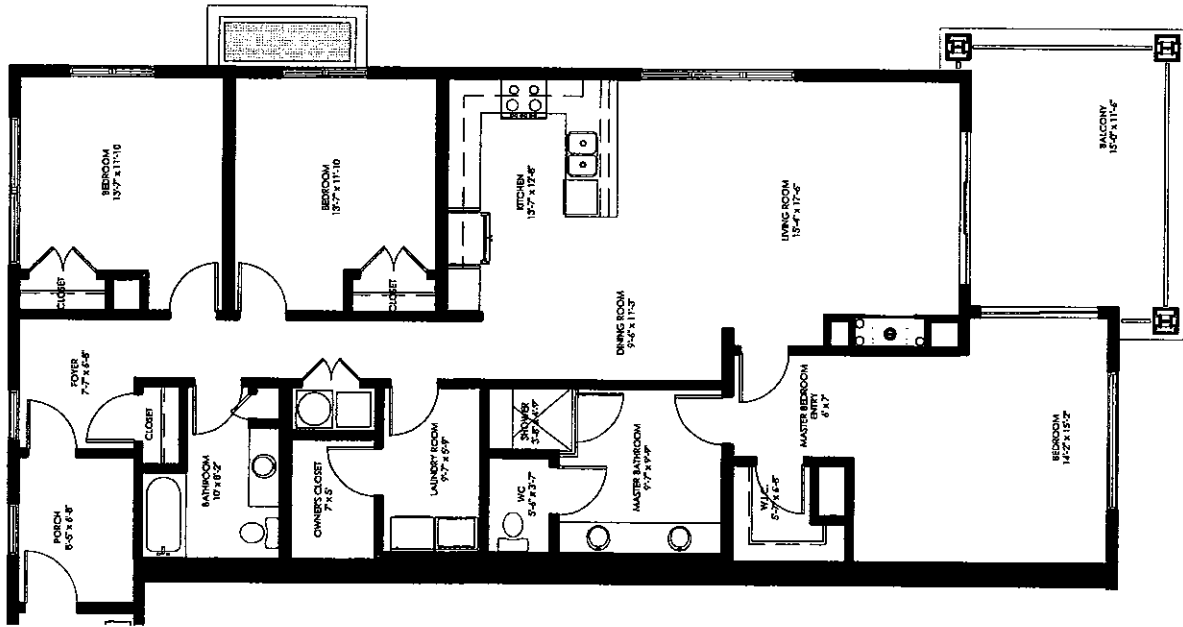
1/32" = 1'-0" WHEN PRINTED AT 8.5 X 11



KEY PLAN

PHASE IV  
**SEASONS CONDO PLAT MAP**  
 SEASONS AT SANDPOINT  
 SANDPOINT, IDAHO

Declaration: I am submitting this floor plan as shown on this Condominium Plat Map and described in the Supplemental Declaration to Condominium and Dabiz A to some to the condominium form of use and ownership into the record of the Idaho State Office of the County Clerk, Boise, Idaho, for the purpose of recording the same. I understand that the recording of this floor plan is subject to the provisions of the Idaho Condominium Act, Title 38, Chapter 12, and the rules of the Board of Contract Administration, and that the recording of this floor plan does not constitute a warranty of any kind, and that the recording of this floor plan and the Supplemental Declaration, Exhibit A and the Condominium Plat Map, and Phase IV now consists of what is described in the Supplemental Declaration, Exhibit A and the Condominium Plat Map.



PHASE IV  
 UNIT TYPE A-R NUMBERS:  
 BUILDING # 8: 8111  
 BUILDING # 8: 8211  
 BUILDING # 8: 8311  
 BUILDING # 8: 8411

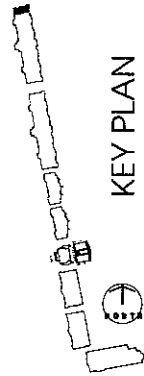
UNIT TYPE A-R AREAS:  
 UNIT TYPE A-R 1668 S.F.  
 UNIT TYPE A-R - BALCONY 157 S.F.  
 TOTAL 1825 S.F.



BUILDING #08: UNIT A-R



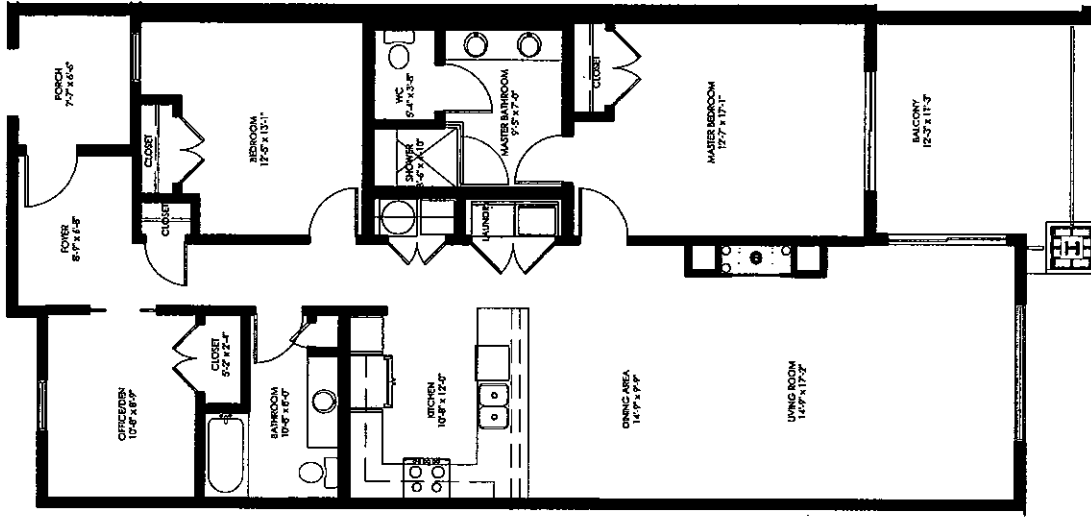
3/32" = 1'-0" WHEN PRINTED AT 8.5 x 11



KEY PLAN

PHASE IV  
**SEASONS CONDO PLAT MAP**  
 SEASONS AT SANDPOINT  
 SANDPOINT, IDAHO

Declaration is submitted of this form only the Phase IV Property as shown on this Condominium Plat Map and described in the Supplemental Declaration to Condominium and Exhibit A to same to the condominium form of use and ownership into the Declaration of Condominium, the Declaration has not been recorded. The Declaration is hereby submitted under the Declaration of Condominium, the Declaration has not been recorded. Phase IV is as depicted in the Supplemental Declaration, Exhibit A and the Condominium Plat Map, and Phase IV now consists of what is described in the Supplemental Declaration, Exhibit A and the Condominium Plat Map.



PHASE IV  
 UNIT TYPE B NUMBERS:  
 BUILDING # 8: 8104  
 BUILDING # 8: 8204  
 BUILDING # 8: 8304  
 BUILDING # 8: 8404  
 BUILDING # 8: 8109  
 BUILDING # 8: 8209  
 BUILDING # 8: 8309  
 BUILDING # 8: 8409

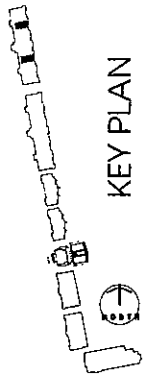
UNIT TYPE B AREAS:  
 UNIT TYPE B 1424 S.F.  
 UNIT TYPE B - BALCONY 139 S.F.  
 TOTAL 1563 S.F.



BUILDING #08: UNIT B



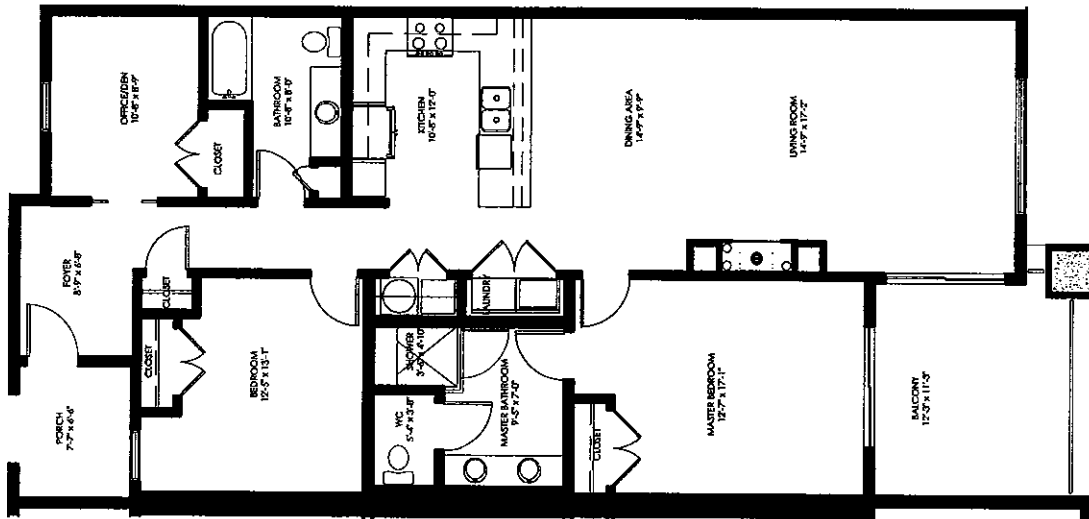
3/32" = 1'-0" WHEN PRINTED AT 8.5 X 11



KEY PLAN

Contractor is submitting at this time only the Phase IV Property as shown on this Condominium Plat Map and described in the Declaration of Condominium, the Declaration of Condominium Property Act, Title 55, Chapter 55, Idaho Code. Pursuant to the Declaration of Condominium, the Declaration of Condominium, the Declaration of Condominium Property Act, Title 55, Chapter 55, Idaho Code, the Declaration of Condominium, the Declaration of Condominium, the Declaration of Condominium, the Declaration of Condominium, the Declaration of Condominium, and Phase IV now consists of what is described in the Supplemental Declaration, Exhibit A and the Condominium Plat Map.

PHASE IV  
**SEASONS CONDO PLAT MAP**  
 SEASONS AT SANDPOINT  
 SANDPOINT, IDAHO



PHASE IV  
 UNIT TYPE B-R NUMBERS:  
 BUILDING # 8: 8103  
 BUILDING # 8: 8203  
 BUILDING # 8: 8303  
 BUILDING # 8: 8403  
 BUILDING # 8: 8108  
 BUILDING # 8: 8208  
 BUILDING # 8: 8308  
 BUILDING # 8: 8408

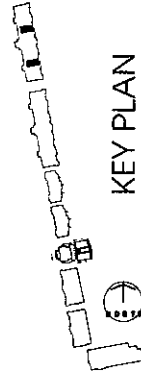
UNIT TYPE B-R AREAS:  
 UNIT TYPE B-R 1424 S.F.  
 UNIT TYPE B-R - BALCONY 139 S.F.  
 TOTAL 1563 S.F.



BUILDING #08: UNIT B-R



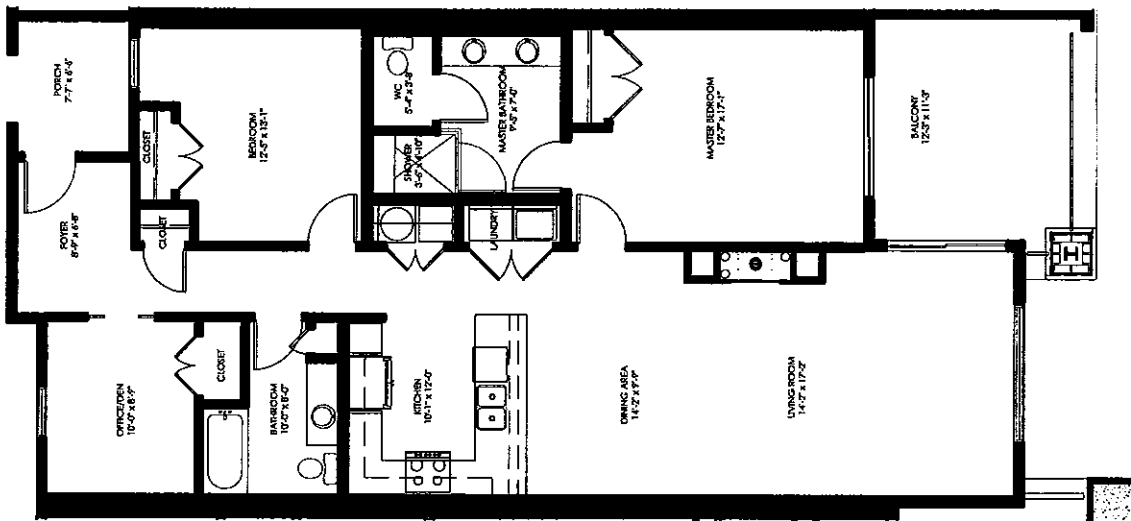
3/32" = 1'-0" WHEN PRINTED AT 8.5 X 11



KEY PLAN

PHASE IV  
**SEASONS CONDO PLAT MAP**  
 SEASONS AT SANDPOINT  
 SANDPOINT, IDAHO

Decedent is submitting of this date only the Phase IV Property as shown on this Condominium Plat Map and described in the Supplemental Declaration to Condominium and Exhibit A to comply with the requirements of use and occupancy under the provisions of the Idaho Condominium Property Act, Title 55, Chapter 15, Idaho Code. Pursuant to the Decedent's rights under the Declaration of Condominium, the Decedent has revised Phase IV as originally described in the Declaration of Condominium, and Phase IV now consists of what is described in the Supplemental Declaration, Exhibit A and the Condominium Plat Map.

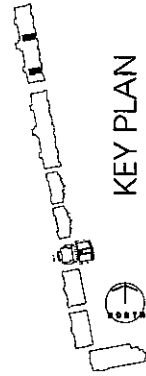


PHASE IV  
 UNIT TYPE B1 NUMBERS:  
 BUILDING # 8: 8102  
 BUILDING # 8: 8302  
 BUILDING # 8: 8402  
 BUILDING # 8: 8107  
 BUILDING # 8: 8207  
 BUILDING # 8: 8307  
 BUILDING # 8: 8407

UNIT TYPE B1 AREAS:  
 UNIT TYPE B1 1390 S.F.  
 UNIT TYPE B1 - BALCONY 139 S.F.  
 TOTAL 1529 S.F.

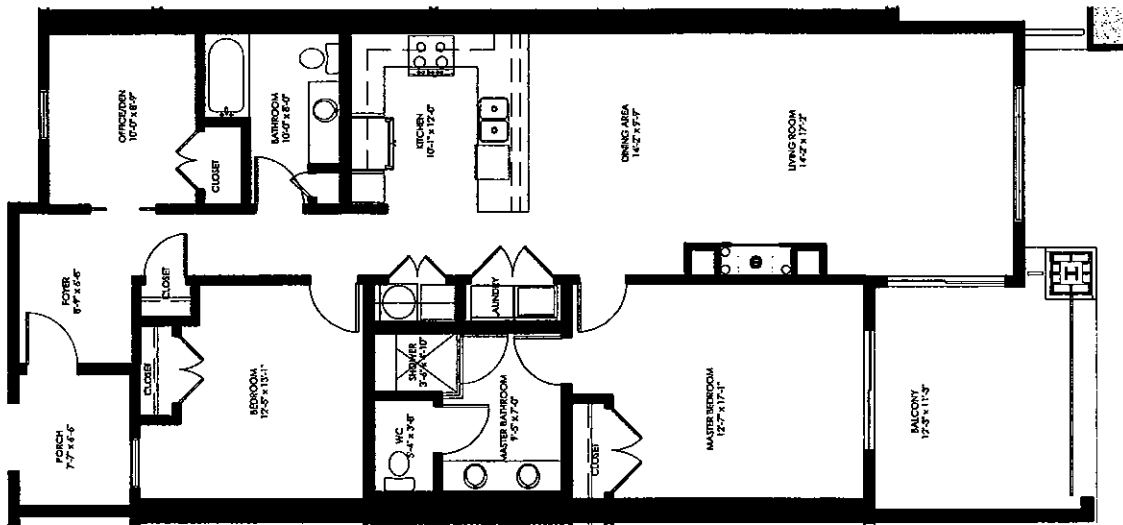


BUILDING #08: UNIT B1  
 0 8 16  
 3/32" = 1'-0" WHEN PRINTED AT 8.5 X 11



KEY PLAN

Design is submitted at this time only. The Phase IV Property is shown on the Condominium Plat Map and described in the Supplemental Declaration to Condominium Property Act, Title 55, Chapter 15, Idaho Code. Payment to the Developer's rights under the Declaration of Condominium. The Developer has retained Phase IV or originally described in the Declaration of Condominium, and Phase IV now consists of what is described in the Supplemental Declaration, Exhibit A and the Condominium Plat Map.



PHASE IV  
 UNIT TYPE B1-R NUMBERS:  
 BUILDING # 8: 8105  
 BUILDING # 8: 8205  
 BUILDING # 8: 8305  
 BUILDING # 8: 8405  
 BUILDING # 8: 8110  
 BUILDING # 8: 8210  
 BUILDING # 8: 8310  
 BUILDING # 8: 8410

UNIT TYPE B1-R AREAS:  
 UNIT TYPE B1-R 1390 S.F.  
 UNIT TYPE B1-R - BALCONY 139 S.F.  
 TOTAL 1529 S.F.



BUILDING #08: UNIT B1-R



1/32" = 1'-0" MEN PRINTED AT 8.5 X 11



KEY PLAN

PHASE IV  
**SEASONS CONDO PLAT MAP**  
 SEASONS AT SANDPOINT  
 SANDPOINT, IDAHO

DocuSign is submitting at this time only the Phases IV Property as shown on this Condominium Plat Map and described in the Supplemental Declaration to Condominium and Exhibit A to same to the condominium form of use and ownership into the provisions of the Idaho Condominium Property Act, Title 55, Chapter 15, Idaho Code. Pursuant to the DocuSign rights under the Declaration of Condominium, the Decedent has reserved Phases IV as originally depicted in the Declaration of Condominium, and Phases IV are hereby reserved to be described in the Supplemental Declaration, Exhibit A and the Condominium Plat Map.







PHASE IV  
 UNIT TYPE C NUMBERS:  
 BUILDING # 8: 8106  
 BUILDING # 8: 8306

UNIT TYPE C AREAS:

UNIT TYPE C - LOWER LEVEL	1172 S.F.
UNIT TYPE C - UPPER LEVEL	946 S.F.
UNIT TYPE C - BALCONY	331 S.F.
<b>TOTAL</b>	<b>2449 S.F.</b>

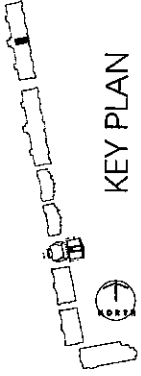
BUILDING #08: UNIT C



3/20" = 1'-0" WHEN PRINTED AT 8.5 X 11



KEY PLAN

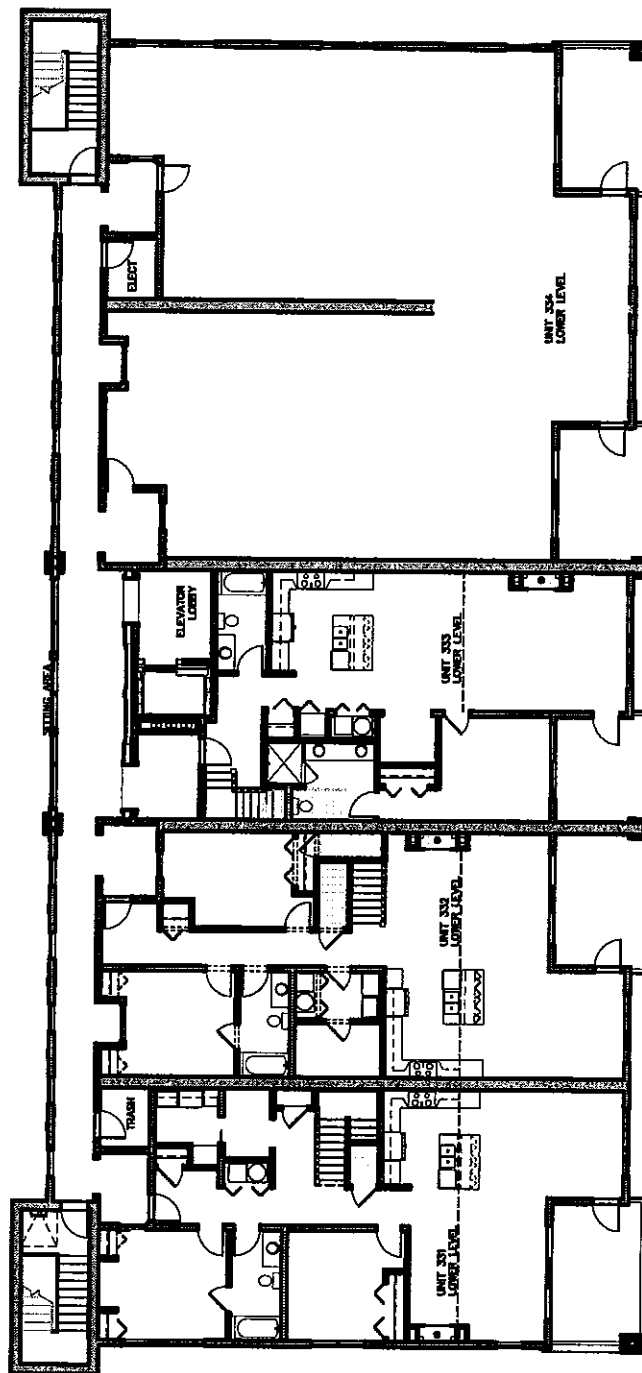


Decorum is submitting of this plan only the Phase IV Property as shown on this Condominium Plat Map and described in the Supplemental Declaration to Condominium and Exhibit A to same to the condominium form of use and ownership into the provisions of the Idaho Condominium Property Act, Title 35, Chapter 15, Idaho Code. Pursuant to the Decorum's rights under the Declaration of Condominium, the Decorum has retained Phase IV as originally described in the Declaration of Condominium, and Phase IV now consists of what is described in the Supplemental Declaration, Exhibit A and the Condominium Plat Map.

PHASE IV  
**SEASONS CONDO PLAT MAP**  
 SEASONS AT SANDPOINT  
 SANDPOINT, IDAHO

**Chancey**  
 Design Partnership  
 Architecture + Planning + Interior Design  
 Printed: July 13, 2007

**EXHIBIT C**  
**Combination of Unit 334 and Unit 335 of**  
**Building 3 of Phase I**  
**Condominium Plat Map**



BUILDING # 03  
FLOOR PLAN-LIVING LEVEL 3

1" = 20'-0" WHEN PRINTED AT 8.5 X 11



PHASE I  
SEASONS CONDO PLAT MAP  
SEASONS AT SANDPOINT  
SANDPOINT, IDAHO

DECLARANT IS SUBMITTING AT THIS TIME ONLY THE PHASE I PROPERTY TO THE CONDOMINIUM FORM OF USE AND OWNERSHIP INTO THE PROVISIONS OF THE IDAHO CONDOMINIUM PROPERTY ACT, TITLE 55, CHAPTER 15, IDAHO CODE. PHASE II, III, AND IV ARE NOT BEING SUBMITTED AT THIS TIME. ALTHOUGH DECLARANT RESERVES THE RIGHT TO SUBSEQUENTLY DO SO, AS MORE PARTICULARLY SET FORTH IN THE DECLARATION OF CONDOMINIUM.

FLOOR PLAN FOR BUILDING 003 IS AN EXACT REPRODUCTION OF BUILDING 003

